

**Environmental Site Assessment  
Transaction Screen  
for the  
Old Boys & Girls Club Building Site  
on the  
Lower Brule Sioux Reservation**

---

**Submitted to:**

**George Honeywell, Tribal EPA Administrator  
Lower Brule Tribal EPA Office  
Lower Brule Sioux Tribe  
187 Oyate Circle  
Lower Brule, SD 57548**

---

**Prepared by:**

**Mary Jane Gourneau  
Brownfields Tribal Response Program Coordinator  
Lower Brule Tribal EPA Office  
187 Oyate Circle  
Lower Brule, SD 57548**

---

**Draft May, 2017**

## EXECUTIVE SUMMARY

An Environmental Site Assessment Transaction Screen for the Old Boys & Girls Club Building Site has been completed by Mary Jane Gourneau, Brownfields TRP Coordinator for the Lower Brule Sioux Tribe, Lower Brule Tribal EPA Office. Preparation of Environmental Site Assessment Transaction Screen was developed in coordination with Christina Wilson (Project Manager, U.S. Environmental Protection Agency (EPA) (Region 8).

The Old Boys & Girls Club building was built in 1964 by the Lower Brule Sioux Tribe to be used as a manufacturing operation by Cal Dak Manufacturing to make electronics. In July of 1967 the firm was renamed as "Chalomar Inc." At that time it employed 13 workers in the high-tech electronics industry. In 1968 a Tribal Council resolution states interest from Omni Industries was to be established at Lower Brule. In November 1968 the Lower Brule Sioux Tribe cancels the lease with Chalomar Inc. In May of 1969 Raven Industries approaches the Tribe with plans to occupy the industrial building. This company had a contract to sew mail bags for the U.S. Postal Service. They opened the doors on July 1970 with 18 employees. The new industry was named Iron Nation Corporation. On February 1972 the Lower Brule Sioux Tribe dissolves the Iron Nation Corporation and the partnership with Raven Industries. The building was then used as the following over the years: AA Halfway House, AA Transitional Living Center, Daycare, Elderly Center, Lower Brule Tribal Office, and Lower Brule Finance Office. It was then again used as the Tribal Office until a new one was built in 2006. It was then taken over by the Boys & Girls Club in February 2006. In 2015 it was damaged by a bad storm. The roof and siding was blown off. The Club tried to make some repairs but in the end it would cost too much to fix.

The single-story building is slab on grade and measure about 4848 square feet. It contained an entrance, two offices, two bathrooms, kitchen/dining area, furnace room, computer electronic room, large open room and two more offices. The building contains seven (7) exterior doors and twenty-two (22) windows. The structure itself is made out of brick. The furnace room has brick walls. There is one brick wall about 20 feet into the entrance of the building. This brick wall runs across from south to west in the interior of the building. At some time a 2 inch foam board was glued to the exterior walls and some kind of siding was blown on the top of the foam. The building has sidewalks all the way around except only partial sidewalks on the north side. The whole building has a cement floor. The ceiling was a drop ceiling. But most of the tiles are gone.

This Environmental Site Assessment Transaction Screen will assist the Lower Brule Sioux Tribe in determining if there is a potential presence of contamination that needs to be addressed. It was conducted in accordance guidelines under the American Society for Testing materials (ASTM), an Excerpt of Practice E1528-06: Standard Practice for Limited Environmental Due Diligence: Transaction Screen Process. The information from this Transaction Screen will assist the Tribe in determining if further assessment needs to be completed and eventually identify various mitigation options

## TABLE OF CONTENTS

<b>I. INTRODUCTION .....</b>	<b>1</b>
A. Purpose .....	1
B. Scope of Work .....	1
C. Significant Assumptions .....	1
D. Limitations and Exceptions .....	2
E. Special Terms and Conditions .....	2
<b>II. SITE DESCRIPTION .....</b>	<b>2</b>
A. Location and Legal Description.....	2
B. Site and Vicinity General Characteristics.....	2
C. Current Uses of the Property .....	3
D. Descriptions of Structures, Roads, and Other Improvements to the Site .....	3
<b>III. USER PROVIDED INFORMATION .....</b>	<b>3</b>
A. Title Records/Tribal Resolutions.....	3
B. Environmental Liens or Activity and Use Limitations.....	4
C. Valuation Reduction for Environmental Issues.....	4
E. Interviews .....	4
F. Historical Use Information on the Property.....	4
G. Historical Use Information on the Adjoining Properties.....	5
<b>IV. SITE RECONNAISSANCE .....</b>	<b>5</b>
A. Methodology.....	5
B. General Site Setting .....	5
C. Exterior Observations .....	5
D. Interior Observations .....	6
E. Physical Setting Sources.....	6
<b>V. RECORDS REVIEW .....</b>	<b>6/7</b>
<b>VI. ENVIRONMENTAL SITE ASSESSMENT TRANSACTION SCREEN.....</b>	<b>9</b>
<b>VII. FINDINGS.....</b>	<b>10</b>
<b>VIII. OPINION AND CONCLUSION .....</b>	<b>10</b>
<b>IX. DEVIATIONS .....</b>	<b>11</b>

<b>X. REFERENCES</b> .....	11
<b>XI. SIGNATURES, ENVIRONMENTAL PROFESSIONAL'S QUALIFICATIONS AND STATEMENT</b> .....	12
<b>XII. ATTACHMENTS</b> .....	13
A: Maps	
B: Site Photographs	

# I. INTRODUCTION

## A. Purpose

The purpose of this Environmental Site Assessment Transaction Screen is to identify potential environmental concerns with the property including any hazardous substances, petroleum products, contaminants, and pollutants that may potentially pose environmental impacts to the Old Boys & Girls Club Building Site resulting from past or present uses of the subject property or surrounding properties. It was conducted in accordance with guidelines under the American Society for Testing Materials (ASTM), an Excerpt of Practice E1528-06: Standard Practice for Limited Environmental Due Diligence: Transaction Screen Process. The information from this Transaction Screen will assist the Tribe in determining if further assessment needs to be completed and eventually identify various mitigation options.

## B. Scope of Work

The scope-of-work for this assessment included an evaluation of the following:

- 1) Reviewing available public records/documents that will help identify potential environmental concerns in connection with the property and surrounding properties.
- 2) Conducting a site reconnaissance to collect data and observe environmental conditions related to the property, surrounding properties, and any structures located on the premises to the extent not obstructed by adjacent buildings, bodies of water, asphalt, other paved areas, or by limiting conditions such as snow or rain.
- 3) Interviewing site-owner or designated persons using the Transaction Screen questionnaire to review property boundaries and obtain information that may be relevant to the site or adjoining properties. Briefly interviewing knowledgeable persons (i.e. neighbors, former owners, regulatory agencies, tribal programs) to establish previous property uses and conditions.
- 4) Preparing a report containing observations relating to the apparent environmental condition of the site and surrounding properties, describing areas of impact, summarizing records/documents reviewed, maps, photographs, analysis of collected data, and the consultant's conclusions.

This Scope of work may be modified as additional information regarding the site or surrounding sites becomes available.

## C. Significant Assumptions

- Assumptions are made that information derived from secondary sources is correct. Except as set forth in this report, there was no independent investigation as to the accuracy or completeness of the information derived from secondary sources or personal interviews and preparers have assumed that such information is accurate and complete.

- Conclusions and recommendations represent opinions that were arrived at in accordance with currently accepted environmental, engineering, hydrologic, and geologic practices and are subject to the inherent limitations of environmental site assessments.

#### **D. Limitations and Exceptions**

- A change in any fact or circumstance upon which this report is based may adversely affect the recommendations, findings, and conclusions expressed in this report.
- No sampling of any materials was performed for this assessment.

#### **E. Special Terms and Conditions**

- This report is for the use and benefit of the Lower Brule Sioux Tribe and third parties authorized in writing by the Lower Brule Sioux Tribe.
- The information contained herein was obtained from sources deemed reliable, but this report should not be construed to constitute an independent investigation and/or verification on the part of the preparer of this document or the Lower Brule Tribe of the Lower Brule Indian Reservation, or any entity thereof. Readers of this document are cautioned and advised to verify the information contained herein through their own investigation. The preparer of this document, the Lower Brule Tribal Brownfields Tribal Response Program under the Lower Brule Sioux Tribe of the Lower Brule Indian Reservation, and any entity thereof specifically deny and disclaim any liability resulting from any actions taken based upon the reliance of or as a result of reliance on this document and/or the information contained herein, including any and all determinations, recommendations, conclusions and requirements. No warranties either express or implied are made in the preparation or dissemination of this document or the information contained herein for the purpose of reliance by third parties.

## **II. SITE DESCRIPTION**

### **A. Location and Legal Description**

The building is constructed slab on grade and was built in 1964; it is located within the community of Lower Brule, in Lyman County, South Dakota on Trust Land of the Lower Brule Indian Reservation. The address is 131 Sitting Bull Street, Lower Brule, South Dakota 57548. The legal description is as follows:

343 T-4030 SW1/4SE1/4SE1/4NW1/4, Section. 15, Township 107 North, Range 73 West, 5P.M., Lyman County, containing 2.50 acres, more or less.

### **B. Site and Vicinity General Characteristics**

The Old Boys & Girls Club is located in the community of Lower Brule, which is in Central South Dakota adjacent to the Missouri River on the Lower Brule Indian Reservation, home to the Lower Brule Sioux Tribe. It is a mixed-use community with a population of 1308 (2007) consisting of Lower Brule Post Office, Lower Brule Elementary School, Lower Brule High School, IHS Clinic, Dental Clinic, Friendship House, Lower Brule Community Center, Elderly Center, Boys & Girls Club, Golden Buffalo Casino, Tribal Housing, Lower Brule Rural Water Office, Lower Brule Housing Authority, Lower Brule Ambulance Program, Brule Hills Trading Post,

Lower Brule Commodity Program, Lower Brule Community College, Lower Brule Day Care, Lower Brule Diabetics Program, Lower Brule Construction Company, Lower Brule Facilities Management Program, Fire Department, Lower Brule Headstart Program, Kul Wicasa Oyate Trading Post, Lakota Foods, Lower Brule Justice/Detention Center, Lower Brule Motor Pool, Lower Brule Propane Program, Lower Brule Roads Department, Lower Brule Treaty Office, Wells Fargo Bank, Lower Brule Wildlife Program and Wolakota Oun Skunpo Program.

The Reservation experienced a devastating flood in 1965 and some structures were relocated and many rebuilt on the current higher ground locations.

The following adjacent and nearby properties border the Old Boys & Girls Club Building Site:

- **North:** U.S. Post Office, two vacant older buildings
- **East:** BIA Hwy 10 and the Missouri River
- **South:** Wells Fargo Bank
- **West:** Golden Buffalo Casino

### **C. Current Uses of the Property**

The building has been vacant for over two years. The building was damaged by a bad storm in 2015. The whole roof and siding was blown off. The building sustained a lot of water damage.

### **D. Descriptions of Structures, Roads, and Other Improvements to the Site**

The single-story building is slab on grade and was built in 1964. It is 4848 square feet. It contained an entrance, two offices, two bathrooms, kitchen/dining area, furnace room, computer electronic room, large open room and two more offices. The building contains seven (7) exterior doors and twenty-two (22) windows. The structure itself is made out of brick. The whole furnace room has brick walls. There is one brick wall that runs across from south to west in the interior of the building. At some time a 2 inch foam board was glued to the outside walls and some kind of siding was blown on the top of it and most of this was blown off in the storm. The building has sidewalks all the way around the building except only partial sidewalks on the north side. The whole building has a cement floor. The ceiling had drop tiles but most of those are gone.

**(See Attachments for and photos maps)**

## **III. USER PROVIDED INFORMATION**

(The users of this Environmental Site Assessment Transaction Screen are the Lower Brule Tribe. They provided information from Tribal files and records, program staff, administration sources and interviews.)

### **A. Title Records**

An abstract for the property was not available for review. The BIA Realty officer, Christy Wolf, provided a map and legal description of the site. Tribal Realty could not find any information on the site. The site is located on Tribal Trust Land for the Lower Brule Tribe.

**B. Environmental Liens or Activity and Use Limitations**

The Tribe is not aware of any environmental liens on the site.

**C. Valuation Reduction for Environmental Issues**

Since the owner does not intent to sell the site, a significantly lower purchase price is not applicable.

**D. Owner, Property Manager, and Occupant Information**

The Lower Brule Sioux Tribe owns the property and it is within the Reservation Boundary on Trust Land. There are no current occupants of the property. The Lower Brule Police Department monitors the building.

**Interviews**

- Dr. Brian Molyneaux, Cultural Resources Office provided information and some pictures.
- Christy Wolf, BIA Reality (605) 473-5561, provided maps but had no further information on this site.
- Trish Lundell Finance Manager Lower Brule Sioux Tribe, (605) 473-5561 provided some information about the history of the building.
- Darlene Traversie (605) 473-5561 provided some information about the history of the building. She stated she worked there for three years starting in 1966.
- Boyd Gourneau Chairman Lower Brule Sioux Tribe (605) 473-5561 provided some information about the history of the building.
- Greg Miller Counseling Program (605) 473-5561 provided some information about the history of the building.

**F. Historical Use Information on the Property**

The building was built in 1964 by the Lower Brule Sioux Tribe to be used as a manufacturing operation by Cal Dak Manufacturing to make electronics. In July of 1967 the firm was renamed as "Chalomar Inc." employing 13 workers in high-tech industry. In 1968 a Tribal Council resolution sates interest from Omni Industries was to be established at Lower Brule. In November 1968 the Lower Brule Sioux Tribe cancels the lease with Chalomar Inc. In May of 1969 Raven Industries approaches the Tribe with plans to occupy the industrial building sewing mail sorting bags for the U.S. Post Office. They opened the doors on July 1970 with 18 employees. The new industry was named Iron Nation Corporation. On February 1972 the Lower Brule Sioux Tribe dissolves the Iron Nation Corporation and the partnership with Raven Industries. The building was then used as the following in the years to come: AA Halfway House, AA Transitional Living Center, Daycare, Elderly Center, Lower Brule Tribal Office, and Lower Brule Finance Office. It was the Tribal Office until a new one was built in 2006. It was then taken over by the Boys & Girls Club in February of 2006 until 2015 when the storm damaged the building.

According to the Environmental Data Research (EDR) Report, neither fire insurance maps nor city directories were available for the site. Information gained from the interviews with Lower Brule Tribal members was used to corroborate the available historical information.



### **G. Historical Use Information on the Adjoining Properties**

- **North** –U.S. Post Office and two empty buildings
- **East**- BIA Hwy 10 and the Missouri River
- **South** –Wells Fargo Bank
- **West** – Golden Buffalo Casino

## **IV. SITE RECONNAISSANCE**

### **A. Methodology**

On May 17, 2017, Mary Jane Gourneau, Brownfields Coordinator, Lower Brule Sioux Tribe Environmental Protection Administration conducted a site reconnaissance for the Old Boys & Girls Club.

### **B. General Site Setting**

The general area is the town of Lower Brule. The area contains Lower Brule Post Office, Lower Brule Elementary School, Lower Brule High School, IHS Clinic, Dental Clinic, Friendship House, Lower Brule Community Center, Elderly Center, Boys & Girls Club, Golden Buffalo Casino, Tribal Housing, Lower Brule Rural Water Office, Lower Brule Housing Authority, Lower Brule Ambulance Program, Brule Hills Trading Post, Lower Brule Commodity Program, Lower Brule Community College, Lower Brule Day Care, Lower Brule Diabetics Program, Lower Brule Construction Company, Lower Brule Facilities Management Program, Fire Department, Lower Brule Headstart Program, Kul Wicasa Oyate Trading Post, Lakota Foods, Lower Brule Justice/Detention Center, Lower Brule Motor Pool, Lower Brule Propane Program, Lower Brule Roads Department, Lower Brule Treaty Office, Wells Fargo Bank, Lower Brule Wildlife Program and Wolakota Oun Skunpo Program.

The Reservation experienced a devastating flood in 1965 and some structures were relocated and many rebuilt on the current higher ground locations.

### **Exterior Observations**

- The building is approximately 4848 square feet.
- Paint was observed on the window frames. All the window frames are rotting.
- The building contains 22 windows and 7 doors.
- All exterior door frames are metal.
- The building sets on the corner of Sitting Bull Avenue and Crazy Horse Avenue.
- The electricity to the building is cut off.
- The windows are covered with metal grates.
- The building was heated with propane and the tank is still there.
- The building is slab on grade.
- No odors or pools were observed.
- No stressed vegetation was observed.
- No soil stains were observed.

**C. Interior Observations**

Note: The building was damaged by a storm in 2015. Most of the ceilings tiles are gone and all most of the sheetrock has been removed. All the flooring tiles and carpet were removed. The building has sat empty for about two years.

**D. Physical Setting Sources**

**Topographical Map Review**

- 1976 USGS Aerial Photography
- 2011 Physical Setting Source Map
- 2016 USGS Aerial Photography
- 2017 BIA Map

**Geology, Topography and Hydrology**

**Geology**

The Lower Brule Reservation is located in the Missouri Plateau Section of the Great Plains Physiographic Province (Cox and Beach 1980). The subject site is likely underlain by Quaternary Alluvium (clay, silt, sand, and some gravel). Alluvium may be up to 30' thick in some areas. The Quaternary Alluvium unconformably overlies bedrock-Pierre Shale. The Pierre Shale is blue-gray to dark gray, fissile to blocky shale with persistent bentonite and black organic shale up to 360' thick in this area. Ogle (1995) reports that all streams on the reservation other than the Missouri River are ephemeral and that shallow groundwater supplies are limited.

**Groundwater**

Shallow groundwater supplies are limited to alluvial deposits along major streams and terrace deposits along the Missouri River (Ogle, 1995). Shallow groundwater may be present in the subsurface within about 10-15' of the land surface. The shallow groundwater gradient is often in the same direction as the surface topography. If so, the shallow groundwater gradient would be to the east.

The Pierre Shale which is at or near the surface in much of the area, has almost no potential as a source of potable water (Cox and Beach, 1980). As the Pierre Shale is relatively impermeable, it acts as a barrier to downward movement of groundwater, causing groundwater to move laterally to points of discharge at contact springs. The bedrock Dakota Sandstone is locate at depth below the Pierre Shale and is considered as aquifer (Cox and Beach, 1980).

**Soils**

The soil in the site vicinity is the Bullcreek Clay, 0 to 6 percent slopes. These soils are deep, moderately well drained, nearly level to gently sloping soils on foot slopes, terraces, and fans (Schumacker, 1987). The soils have very slow permeability and the available water capacity is low. The shrink-swell potential of the soil is very high.

### **Climate**

The Lower Brule area has warm summers and cold dry winters with an average year-round temperature of 59F. The prairie winds are rarely far away, especially in the spring, average 14 mph daily all year around. Summers are generally hot, with temperatures ranging between 80F and 110F. Most of the 18 inches of annual precipitation falls as rain and there are occasional droughts during the summer. Waves of moist and cooler air crossing the region from the south, west and north during the warmest months sometimes trigger violent thunderstorms and tornadoes. Spring and autumn are extremely beautiful and throughout the year the sunrise and sunset can be absolutely stunning. Winter temperatures range between 30F and 25F. Winters can be very harsh, with moderate to heavy snowfalls and occasional severe blizzard conditions, but winter thaws moderate the effects and spring often returns early.

### **Radon**

Based upon the review of radon information in the South Dakota Radon Information, Lyman County is located within Zone 1 with >4.0 (pCi/L). EPA's recommends threshold level at which implementation of radon-resistant features in new construction is above 4 pCi/L.

## **V. RECORDS REVIEW**

Due to poor or inadequate address information, the following sites were not listed or mapped by EDR. Even though they were not identified in the EDR, the Tribe is aware of their locations and they do not pose an impact to the Thompson Site/Fort Hale Bottom:

1. ATP-Contaminated Soils-Education, Leaking Underground Storage Tank (LUST) list
2. EPA LUST Trust Property, Lower Brule (LUST)
3. Lower Brule Sioux Tribes-Resource Conservation & Recovery Act (RCRA)-Conditionally Exempt Small Quantity Generator (CESQG), Facility Index System/Facility Registry System (FINDS) lists.
4. BIA Route 5 and Crazy Horse St.-Emergency Response Notification System (ERNS)
5. Tribal Commodity Store (abandoned)-Underground Storage Tanks on Indian Land (INDIAN UST)
6. Lower Brule Retail Center-INDIAN UST
7. BIA Roads Department- INDIAN UST
8. Tribal Commodity Store (abandoned)-INDIAN LUST
9. BIA Roads Department-INDIAN LUST

<b>Site name</b>	<b>Database(s)</b>
BIA Ed. Admin. Bldg.	UST
Tony Moran Ranch	UST
Tony Moran Ranch	UST
Old Tribal Farm Shop	UST
LBST Tribal Farm Corp.	UST
LB Community College	UST
LB Employment Enterprise	UST
LB Employment Enterprise	UST
LB Old Headstart	UST

- **Envirofacts Search, February, 2016** – Mary Jane Gourneau, the Tribal Brownfields Coordinator, searched the online Envirofacts Database and identified the following listings for Lower Brule, SD 57548.

**LIST OF EPA-REGULATED FACILITIES IN ENVIROFACTS**

<b>Facility</b>	<b>Reporting System</b>
Durkin Dump Property 26 miles NW of Lower Brule Lower Brule , SD 57548	ACRES
Former BIA Administration Building 90001 Red Cloud St Lower Brule, SD 57548	ACRES
Former BIA Jail Tribal Hwy 10 Lower Brule, SD 57548	ACRES
Kids Pond Dump 0.8 Miles West of Lower Brule Community Hwy 10 Lower Brule, SD 57548	ACRES

- **Flood Zone Data** – HTTP-Status 404-/data/Q3?C46085.Eoo.zip Lyman County. Data requested is not available
- **GeoTek Physical Setting Source Map Findings -Radon**
- **BIA Records** – No sources identified
- **IHS Records** – No sources identified

## **VI. Environmental Site Assessment Transaction Screen Questionnaire**

Below is the Environmental Site Assessment Transaction Screen Questionnaire that lists answers provided by the owner in relation to the property. The Lower Brule Sioux Tribe owner, Chairman Boyd Gourneau represented himself for recording purposes on the questionnaire. Mary Jane Gourneau, Brownfields TRP Coordinator, conducted the site reconnaissance answers on the questionnaire

*user* must determine, in the exercise of the *user's* reasonable business judgment, the scope of such further inquiry.

5.8 *Further Inquiry*—Upon completing the *transaction screen questionnaire*, if the *user* concludes that further inquiry or action is needed (for example, consult with an environmental consultant, contractor, governmental authority, or perform additional governmental and/or historical records review), the *user* should proceed with such inquiry. (Note that if the *user* determines to proceed with a Phase I Environment Site Assessment, the *user* may apply the current Practice E 1527 or alternatively the provisions of EPA's regulation "Standards and Practices for All Appropriate Inquiries," 40 C.F.R. Part 312.)

5.9 *Signature*—The *user* and the *preparer* of the *transaction screen questionnaire* must complete and sign the questionnaire as provided at the end of the questionnaire.

### 6. Transaction Screen Questionnaire

6.1 *Persons to Be Questioned*—The following questions should be asked of (1) the current *owner* of the *property*, (2)

any major *occupant* of the *property* or, if the *property* does not have any major *occupants*, at least 10 % of the *occupants* of the *property*, and (3) in addition to the current *owner* and the *occupants* identified in (2), any *occupant* likely to be using, treating, generating, storing, or disposing of *hazardous substances* or *petroleum products* on or from the *property*. A major *occupant* is any *occupant* using at least 40 % of the leasable area of the *property* or any anchor tenant when the *property* is a shopping center. In a multifamily *property* containing both residential and commercial uses, the *preparer* does not need to ask questions of the residential *occupants*. The *preparer* should ask each person to answer all questions to the best of the respondent's *actual knowledge* and in good faith. When completing the *site visit* column, the *preparer* should be sure to observe the *property* and any buildings and other structures on the *property*. The guide to this *transaction screen questionnaire* (see Sections 7-10) provides further details on the appropriate use of this questionnaire. (See Note 2.)

NOTE 2—Unk = "unknown" or "no response."

Description of Site/Address:

Old Boys & Girls Club  
131 Sitting Bull Street  
Lower Brule, Sd 57548

Question	Owner	Occupants (if applicable)	Observed During Site Visit	If yes, provide description
1a. Is the <i>property</i> used for an industrial use?	Yes No Unk	Yes No Unk	Yes	(No)
1b. Is any <i>adjoining property</i> used for an industrial use?	Yes No Unk	Yes No Unk	Yes	(No)
2a. Did you observe evidence or do you have any prior knowledge that the <i>property</i> has been used for an industrial use in the past?	Yes No Unk	Yes No Unk	Yes	(No)
2b. Did you observe evidence or do you have any prior knowledge that any <i>adjoining property</i> has been used for an industrial use in the past?	Yes (No) Unk	Yes No Unk	Yes	(No)
3a. Is the <i>property</i> used as a gasoline station, motor repair facility, commercial printing facility, dry cleaners, photo developing laboratory, junkyard or landfill, or as a waste treatment, storage, disposal, processing, or recycling facility (if applicable, identify which)?	Yes (No) Unk	Yes No Unk	Yes	(No)
3b. Is any <i>adjoining property</i> used as a gasoline station, motor repair facility, commercial printing facility, dry cleaners, photo developing laboratory, junkyard or landfill, or as a waste treatment, storage, disposal, processing, or recycling facility (if applicable, identify which)?	Yes (No) Unk	Yes No Unk	Yes	(No)

Question	Owner	Occupants (if applicable)			Observed During Site Visit		If yes, provide description	
		Yes	No	Unk	Yes	No		
4a. Did you observe evidence or do you have any prior knowledge that the <i>property</i> has been used as a gasoline station, motor repair facility, commercial printing facility, dry cleaners, photo developing laboratory, junkyard or landfill, or as a waste treatment, storage, disposal, processing, or recycling facility (if applicable, identify which)?	Yes	<input checked="" type="radio"/> No	Unk	Yes	No	Unk	Yes	<input checked="" type="radio"/> No
4b. Did you observe evidence or do you have any prior knowledge that any <i>adjoining property</i> has been used as a gasoline station, motor repair facility, commercial printing facility, dry cleaners, photo developing laboratory, junkyard or landfill, or as a waste treatment, storage, disposal, processing, or recycling facility (if applicable, identify which)?	Yes	<input checked="" type="radio"/> No	Unk	Yes	No	Unk	Yes	<input checked="" type="radio"/> No
5a. Are there currently any damaged or discarded automotive or industrial batteries, pesticides, paints, or other chemicals in individual containers of >5 gal (19 L) in volume or 50 gal (190 L) in the aggregate, stored on or used at the <i>property</i> or at the facility?	Yes	<input checked="" type="radio"/> No	Unk	Yes	No	Unk	Yes	<input checked="" type="radio"/> No
5b. Did you observe evidence or do you have any prior knowledge that there have been previously any damaged or discarded automotive or industrial batteries, or pesticides, paints, or other chemicals in individual containers of >5 gal (19 L) in volume or 50 gal (190 L) in the aggregate, stored on or used at the <i>property</i> or at the facility?	Yes	<input checked="" type="radio"/> No	Unk	Yes	No	Unk	Yes	<input checked="" type="radio"/> No
6a. Are there currently any industrial drums (typically 55 gal (208 L)) or sacks of chemicals located on the <i>property</i> or at the facility?	Yes	<input checked="" type="radio"/> No	Unk	Yes	No	Unk	Yes	<input checked="" type="radio"/> No
6b. Did you observe evidence or do you have any prior knowledge that there have been previously any industrial drums (typically 55 gal (208 L)) or sacks of chemicals located on the <i>property</i> or at the facility?	Yes	<input checked="" type="radio"/> No	Unk	Yes	No	Unk	Yes	<input checked="" type="radio"/> No
7a. Did you observe evidence or do you have any prior knowledge that <i>fill dirt</i> has been brought onto the <i>property</i> that originated from a contaminated site?	Yes	<input checked="" type="radio"/> No	Unk	Yes	No	Unk	Yes	<input checked="" type="radio"/> No
7b. Did you observe evidence or do you have any prior knowledge that <i>fill dirt</i> has been brought onto the <i>property</i> that is of an unknown origin?	Yes	<input checked="" type="radio"/> No	Unk	Yes	No	Unk	Yes	<input checked="" type="radio"/> No
8a. Are there currently any <i>pits</i> , <i>ponds</i> , or <i>lagoons</i> located on the <i>property</i> in connection with waste treatment or waste disposal?	Yes	<input checked="" type="radio"/> No	Unk	Yes	No	Unk	Yes	<input checked="" type="radio"/> No
8b. Did you observe evidence or do you have any prior knowledge that there have been previously, any <i>pits</i> , <i>ponds</i> , or <i>lagoons</i> located on the <i>property</i> in connection with waste treatment or waste disposal?	Yes	<input checked="" type="radio"/> No	Unk	Yes	No	Unk	Yes	<input checked="" type="radio"/> No

Question	Owner	Occupants (If applicable)			Observed During Site Visit	If yes, provide description		
9a. Is there currently any stained soil on the <i>property</i> ?	Yes	<input type="radio"/> No	Unk	Yes	No	Unk	Yes	<input type="radio"/> No
9b. Did you observe evidence or do you have any prior knowledge that there has been previously, any stained soil on the <i>property</i> ?	Yes	<input type="radio"/> No	Unk	Yes	No	Unk	Yes	<input type="radio"/> No
10a. Are there currently any registered or unregistered storage tanks (above or underground) located on the <i>property</i> ?	Yes	<input type="radio"/> No	Unk	Yes	No	Unk	Yes	<input type="radio"/> No
10b. Did you observe evidence or do you have any prior knowledge that there have been previously, any registered or unregistered storage tanks (above or underground) located on the <i>property</i> ?	Yes	<input type="radio"/> No	Unk	Yes	No	Unk	Yes	<input type="radio"/> No
11a. Are there currently any vent pipes, fill pipes, or access ways indicating a fill pipe protruding from the ground on the <i>property</i> or adjacent to any structure located on the <i>property</i> ?	Yes	<input type="radio"/> No	Unk	Yes	No	Unk	Yes	<input type="radio"/> No
11b. Did you observe evidence or do you have any prior knowledge that there have been previously, any vent pipes, fill pipes, or access ways indicating a fill pipe protruding from the ground on the <i>property</i> or adjacent to any structure located on the <i>property</i> ?	Yes	<input type="radio"/> No	Unk	Yes	No	Unk	Yes	<input type="radio"/> No
12a. Is there currently evidence of leaks, spills or staining by substances other than water, or foul odors, associated with any flooring, drains, walls, ceilings, or exposed grounds on the <i>property</i> ?	Yes	<input type="radio"/> No	Unk	Yes	No	Unk	Yes	<input type="radio"/> No
12b. Did you observe evidence or do you have any prior knowledge that there have been previously any leaks, spills, or staining by substances other than water, or foul odors, associated with any flooring drains, walls, ceilings or exposed grounds on the <i>property</i> ?	Yes	<input type="radio"/> No	Unk	Yes	No	Unk	Yes	<input type="radio"/> No
13a. If the <i>property</i> is served by a private well or non-public water system, is there evidence or do you have prior knowledge that contaminants have been identified in the well or system that exceed guidelines applicable to the water system?	Yes	<input type="radio"/> No	Unk	Yes	No	Unk	Yes	<input type="radio"/> No
13b. If the <i>property</i> is served by a private well or non-public water system, is there evidence or do you have prior knowledge that the well has been designated as contaminated by any government environmental/health agency?	Yes	<input type="radio"/> No	Unk	Yes	No	Unk	Yes	<input type="radio"/> No
14. Does the <i>owner</i> or <i>occupant</i> of the <i>property</i> have any knowledge of <i>environmental liens</i> or governmental notification relating to past or recurrent violations of environmental laws with respect to the <i>property</i> or any facility located on the <i>property</i> ?	Yes	<input type="radio"/> No	Unk	Yes	No	Unk		



Question	Owner	Occupants (if applicable)			Observed During Site Visit		If yes, provide description	
15a. Has the <i>owner</i> or <i>occupant</i> of the <i>property</i> been informed of the past existence of <i>hazardous substances</i> or <i>petroleum products</i> with respect to the <i>property</i> or any facility located on the <i>property</i> ?	Yes <input checked="" type="radio"/> No	Unk	Yes	No	Unk			
15b. Has the <i>owner</i> or <i>occupant</i> of the <i>property</i> been informed of the current existence of <i>hazardous substances</i> or <i>petroleum products</i> with respect to the <i>property</i> or any facility located on the <i>property</i> ?	Yes <input checked="" type="radio"/> No	Unk	Yes	No	Unk			
15c. Has the <i>owner</i> or <i>occupant</i> of the <i>property</i> been informed of the past existence of environmental violations with respect to the <i>property</i> or any facility located on the <i>property</i> ?	Yes <input checked="" type="radio"/> No	Unk	Yes	No	Unk			
15d. Has the <i>owner</i> or <i>occupant</i> of the <i>property</i> been informed of the current existence of environmental violations with respect to the <i>property</i> or any facility located on the <i>property</i> ?	Yes <input checked="" type="radio"/> No	Unk	Yes	No	Unk			
16. Does the <i>owner</i> or <i>occupant</i> of the <i>property</i> have any knowledge of any <i>environmental site assessment</i> of the <i>property</i> or facility that indicated the presence of <i>hazardous substances</i> or <i>petroleum products</i> on, or contamination of, the <i>property</i> or recommended further assessment of the <i>property</i> ?	Yes <input checked="" type="radio"/> No	Unk	Yes	No	Unk			
17. Does the <i>owner</i> or <i>occupant</i> of the <i>property</i> know of any past, threatened, or pending lawsuit or administrative proceedings concerning a release or threatened release of any <i>hazardous substance</i> or <i>petroleum products</i> involving the <i>property</i> by any <i>owner</i> or <i>occupant</i> of the <i>property</i> ?	Yes <input checked="" type="radio"/> No	Unk	Yes	No	Unk			
18a. Does the <i>property</i> discharge <i>waste-water</i> (not including sanitary waste or storm water) onto or adjacent to the <i>property</i> and/or into a storm water system?	Yes <input checked="" type="radio"/> No	Unk	Yes	No	Unk	Yes	No	
18b. Does the <i>property</i> discharge waste water (not including sanitary waste or storm water) onto or adjacent to the <i>property</i> and/or into a sanitary sewer system?	Yes <input checked="" type="radio"/> No	Unk	Yes	No	Unk	Yes	No	
19. Did you observe evidence or do you have any prior knowledge that any <i>hazardous substances</i> or <i>petroleum products</i> , unidentifiable waste materials, tires, automotive or industrial batteries, or any other waste materials have been dumped above grade, buried and/or burned on the <i>property</i> ?	Yes <input checked="" type="radio"/> No	Unk	Yes	No	Unk	Yes	No	
20. Is there a transformer, capacitor, or any hydraulic equipment for which there are any records indicating the presence of <i>PCBs</i> ?	Yes <input checked="" type="radio"/> No	Unk	Yes	No	Unk	Yes	No	

Government Records/Historical Sources Inquiry  
(See guide, Section 10)

21. Do any of the following federal, state, or tribal government record systems list the *property* or any *property* within the search distance noted below (where available):

	Approximate Minimum Search Distance, miles (kilometres)		
Federal <i>NPL</i> site list	1.0 (1.6)	Yes	<input type="radio"/> No
Federal Deltated <i>NPL</i> site list	0.5 (0.8)	Yes	<input type="radio"/> No
Federal CERCLIS list	0.5 (0.8)	Yes	<input type="radio"/> No
Federal CERCLIS NFRAP site list	0.5 (0.8)	Yes	<input type="radio"/> No
Federal RCRA CORRACTS facilities list	1.0 (1.6)	Yes	<input type="radio"/> No
Federal RCRA non-CORRACTS TSD Facilities list	0.5 (0.8)	Yes	<input type="radio"/> No
Federal <i>RCRA generators list</i>		Yes	<input type="radio"/> No
Federal Institutional control/engineering control registries	<i>property and adjoining properties</i>		
Federal <i>ERNS list</i>	<i>property only</i>	Yes	<input type="radio"/> No
State and tribal lists of <i>hazardous waste sites</i> identified for investigation or remediation:			
State and tribal equivalent <i>NPL</i>	1.0 (1.6)	Yes	<input type="radio"/> No
State and tribal equivalent CERCLIS	0.5 (0.8)	Yes	<input type="radio"/> No
State and tribal <i>landfill and/or solid waste disposal site lists</i>	0.5 (0.8)	Yes	<input type="radio"/> No
State and tribal <i>leaking storage tank lists</i>	0.5 (0.8)	Yes	<input type="radio"/> No
State and tribal registered storage tank lists		Yes	<input type="radio"/> No
State and tribal <i>institutional control/engineering control registries</i>	<i>property and adjoining properties</i>	Yes	<input type="radio"/> No
State and tribal <i>voluntary cleanup sites</i>	0.5 (0.8)	Yes	<input type="radio"/> No
State and tribal <i>Brownfield sites</i>	0.5 (0.8)	Yes	<input type="radio"/> No

22. Based upon a review of *fire insurance maps* (10.2.3) or *local street directories* (10.2.3), all as specified in the guide, are any buildings or other improvements on the *property* or on an *adjoining property* identified as having been used for an industrial use or uses likely to lead to contamination of the *property*?

Yes  No  Unavailable

Result: \_\_\_\_\_

The *Owner* questionnaire answers were provided was completed by:

Name  
Title  
Firm  
Address

Phone number  
Date  
Role(s) at the site  
Number of years at the site  
Relationship to *user* (for example, principal, employee, agent, consultant)

The *Occupant* questionnaire answers were provided by:

Name  
Title  
Firm  
Address

Phone number  
Date  
Role(s) at the site  
Number of years at the site  
Relationship to *user* (for example, principal, employee, agent, consultant)

The *Site Visit* questionnaire was completed by:

Name Mary Jane Gourneau  
Title EPO Brownfields Coordinator  
Firm Lower Brule Sioux Tribe  
Address 187 Oyate Circle, Lower Brule, SD 57548

Phone number (605) 473-0163 June 1, 2017  
Date  
Relationship to site  
Relationship to *user* (for example, principal, employee, agent, consultant)

The *Government Records and Historical Sources Inquiry* questionnaire was completed by:

Name  
Title  
Firm  
Address

Phone number  
Date  
Relationship to site  
Relationship to *user* (for example, principal, employee, agent, consultant)

*User's* relationship to the site (for example, *owner*, prospective purchaser, lender, etc.)

If the *preparer(s)* is different from the *user*, complete the following:

Name of *User*  
*User's* address

*User's* phone number

Copies of the completed questionnaires have been filed at:

Copies of the completed questionnaires have been mailed or delivered to:

*Preparer* represents that to the best of the *preparer's* knowledge the above statements and facts are true and correct and to the best of the *preparer's* actual knowledge no material facts have been suppressed or misstated.

Signature <u>Mary Coonan</u>	Date <u>6-1-2017</u>
Signature _____	Date _____
Signature _____	Date _____

It is the *user's* responsibility to draw conclusions regarding affirmative or unknown answers.

## 7. Guide to Transaction Screen Questionnaire

7.1 The following sets forth the guide to the *transaction screen questionnaire*. The guide accompanies the *transaction screen questionnaire* to assist the *preparer* in completing the questionnaire. Questions found in the *transaction screen questionnaire* are repeated in the guide.

7.2 If the *preparer* completing the *transaction screen questionnaire* is familiar with the guide from prior usage, the questionnaire may be completed without reference to the guide.

7.3 The *site visit* portion of the guide considers most of the same questions set forth in the guide to *owner/occupant* inquiry because the *transaction screen process* requires both questions of *owners* and *occupants* of the *property* and observations of the *property* by the *preparer*.

7.4 Prior *transaction screen* usage procedures are contained in the guide to *owner/occupant* inquiry and the guide to government records/historical sources inquiry. The information supplied in connection with the *site visit* portion of a prior *transaction screen* may be used for guidance, but may not be relied upon without determining through a new *site visit* whether any conditions that are material to potential environmental concerns in connection with the *property* have changed since the prior *transaction screen*. Therefore, the guide to the *site visit* does not contain any prior assessment procedures.

7.5 In performing the *site visit* portion of the *transaction screen process*, the *preparer* should *visually and physically observe* the *property* and any structure located on the *property* to the extent not obstructed by bodies of water, cliffs, adjacent buildings, or other impassable obstacles.

7.5.1 The periphery of the *property* should be *visually and physically observed*, as well as the periphery of all structures on the *property*, and the *property* should be viewed from all adjacent public thoroughfares. Any overgrown areas should be inspected, including roads or paths with no apparent outlet that should be *visually and physically observed* to their ends.

7.5.2 On the interior of structures on the *property*, accessible common areas expected to be used by building *occupants* or the public (such as lobbies, hallways, utility rooms, and recreation areas), a representative sample of *owner* and *occupant* spaces, and maintenance and repair areas, including boiler rooms, should be *visually and physically observed*. It is not necessary to look under floors, above ceilings, or behind walls.

7.5.3 After completing the *site visit*, the *preparer* of the *transaction screen questionnaire* may obtain "yes" answers that require the *preparer* once again to ask questions of the *owner* of the *property* or *occupants* of the *property* to satisfy the *user* that no further inquiry is necessary.

7.6 In addition to asking questions of the *owner* of the *property* and *occupants* of the *property* (Section 8) and *visually and physically observing* the *property* (Section 9), the *user* completing the *transaction screen process* should determine, either from governmental agencies or through commercial services providing government environmental records, whether certain known or suspected contaminated sites or activities involving the release of *hazardous substances* or *petroleum products* occur on or near the *property*. See Section 10.

7.6.1 These records may be obtained either directly from the government agencies or from commercial services that provide the records for a fee. Because of the numerous sources that

## VII. FINDINGS

(Note that ASTM defines a “recognized environmental condition” as the presence or likely presence of any hazardous substances or petroleum products on a property under conditions that indicate an existing release, a past release, or a material threat of a release of any hazardous substances or petroleum products into structures on the property or into the ground, ground water, or surface water of the property.)

### *Findings under the following specific categories:*

**Note:** The building because of its age will possibly contain the below listed hazardous substances.

#### **CERCLA hazardous substances –**

- Asbestos: Potential asbestos in unknown flooring, ceiling and walls. Unknown if any insulation contained asbestos.
- Lead: Potential lead-based paint on interior/exterior window frames.
- Poly Chlorinated Biphenyls: Unknown if in the wiring, switches and lights.

**Pollutants –** Guano or rodent droppings.

**Contaminants –**

**Petroleum/petroleum products –** None determined or observed.

**Controlled substances –** None determined or observed.

**Other –**

## VIII. OPINION AND CONCLUSION

It is recommended that a Phase II Site Assessment be conducted for the Old Boys & Girls Club Building Site because of the observation of potential asbestos and lead-based paint contamination. Other contaminations may also be present.

## IX. DEVIATIONS

No deviations were identified.

## X. REFERENCES

- Timeline of Original Industrial Building at Lower Brule Dr. Brain Molyneaux
- Lower Brule Sioux Tribal Ordinance 06-001 (2- 1-06)
- American Society for Testing Materials (ASTM). (2006). *Excerpt of Practice E1528-06: Standard Practice for Limited Environmental Due Diligence: Transaction Screen Process*. West Conshohocken, PA 2012.
- Lower Brule Sioux Tribe. Mary Jane Gourneau (Brownfields Coordinator),
- Christy Wolf (BIA Realty Office)
- Envirofacts Website. (2014). Information on EPA environmental data. Retrieved from Internet
- <http://oaspub.epa.gov/enviro/enviroFACTS.quickstart?minx=-99.904175&miny=44.010596&maxx=-99.423523&maxy=44.247167&ve=10,44.12936910556636,-9...>
- <http://oaspub.epa.gov/enviro/CERCLISQuery.list?minx=-99.94400&miny=43.93548&maxx=-99.463347&maxy=44.172355&av=10,05448532104491,99.70>
- <http://www.epa.gov/superfund/search-superfund-sites-where-you-live>
- TRI Facilities in South Dakota,[http://www.rtknet.org/db/tri/tri.php?database=tri?retype=f&reporting\\_year=2014](http://www.rtknet.org/db/tri/tri.php?database=tri?retype=f&reporting_year=2014)
- ERNS Incidents in South Dakota  
[http://data.rtknet.org/erns/erns.php?retype=f&database=erns&reporting\\_year=2012&details=-1&sortp=i&datatype=T&loc-state=SD](http://data.rtknet.org/erns/erns.php?retype=f&database=erns&reporting_year=2012&details=-1&sortp=i&datatype=T&loc-state=SD)
- National Biennial PCRA Hazardous Waste Report: Based on 1991 Data
- Cleanups in My Community List Results  
[http://ofmpub.epa.gov/apex/cimc/f?p=CIMC:35:::35:P35\\_BF\\_ASSESS\\_IND,P35\\_BF\\_ASSESS\\_PILOT\\_IND,P35\\_BF\\_CLEANUP\\_IND\\_P35\\_BF\\_RLF\\_IND\\_P35\\_99.57672119140625&pSearch=lower Brule SD20nd.-](http://ofmpub.epa.gov/apex/cimc/f?p=CIMC:35:::35:P35_BF_ASSESS_IND,P35_BF_ASSESS_PILOT_IND,P35_BF_CLEANUP_IND_P35_BF_RLF_IND_P35_99.57672119140625&pSearch=lower Brule SD20nd.-)

• **XI. SIGNATURES**

We declare that, to the best of our professional knowledge and belief, we meet the definition of Environmental Professional as defined in § 312.10 of 40 CFR 312 and we have the specific qualification based on education, training, and experience to assess a property of the nature, history, and setting of the subject property. We have conducted an Environmental Site Assessment Transaction Screen in accordance with guidelines under the American Society for Testing materials (ASTM), an Excerpt of Practice E1528-06: Standard Practice for Limited Environmental Due Diligence: Transaction Screen Process.

*Mary Jane Gourneau*

6-30-2017

Mary Jane Gourneau, Brownfields TRP Coordinator,  
Lower Brule Tribal EPA Office  
Lower Brule Sioux Tribe, Lower Brule, SD

Date

**Environmental Professional's Qualifications**

Mary Jane Gourneau, Brownfields TRP Coordinator, Lower Brule Tribe Environmental Protection Administration:

Mary Jane Gourneau has served as the tribes' Brownfields Tribal Response Program Coordinator for the last 7 years. She has received certifications in the environmental field, emergency management training courses including OSHA 40-Hour Hazwoper and ASTM Training Phase I & II.

## **ATTACHMENTS**

### **ATTACHMENT A: Maps**

#1. BIA Topographic Map, Lower Brule, SD 5-12-2016

#2 1965 Map

#3 2017 Map

### **ATTACHMENT B: Site Drawing**

### **ATTACHMENT C: Site Photographs**

1. Pictures of building 1966
2. Building when it was the Tribal Office 1969
3. Boys & Girls Club 2006
4. Blown On Siding
5. Blown On Siding
6. Siding
7. Brick Exterior Walls
8. Window Frames
9. Window
10. Looking West towards Casino
11. Front looking east
12. West side
13. South
14. Air Conditioner Units
15. Bathroom
16. computer room
17. Outside Door (west Side)
18. Electrical Room
19. Air conditioner Ducts
20. Office
- 21./22./23./24. Furnace Room
25. Ceiling
26. Heating duct

## **Timeline of Original Industrial Building at Lower Brule**

Brian Molyneaux, Cultural Resources, 23NOV16

Note: Timeline numbers are keyed to attached documents

1. Wed, Jan 19, 1966 – Mitchell Daily Republic (MDR)– article states that Cal Dak Manufacturing is establishing an electronics manufacturing company at Lower Brule and they have “moved into a new structure built for the company and is in operation”.
2. Wed, Jul 19, 1967 – MDR – the firm renamed as “Chalomar, Inc.”, employing 13 workers in high-tech industry!
3. September 10, 1968 – Tribal Council Resolution – states interest from Omni Industries to establish at Lower Brule
4. Oct 3, 1968 – MDR – announcement that Omni Design will move into existing industrial building (up until then occupied by Chalomar, Inc)
5. November 6, 1968 – TCR 69-33 – the Tribe cancels the lease agreement with Chalomar, Inc.
6. November 19, 1968 – MDR – article on Omni, mentioning the facility at Lower Brule.
7. December 14, 1968 – MDR – article stating closure of Chalomar, Inc. plant. Note that they say the Chalomar plant was established “about 4 years ago”, which would be 1964 – 65.
8. February 2, 1969 – MDR – article states that the Omni plant is set to go into production “by Mid-March”.
9. May 8, 1969 – TCMinutes – Raven Industries approaches the Tribe with plans to occupy the industrial building (up until then supposedly to be used by Omni).
10. June 4, 1969 – TCMinutes – further update on Raven Industries plans. Later announcement of final settlement with Chalomar.
11. December 19, 1969 – MDR – article announcing that Raven Industries will set up a manufacturing industry at Lower Brule (sewing mail sorting bags for the Post Office).
12. July 10, 1970 – MDR – article on Raven Industry plant at Lower Brule – names the operating entity as Iron Nation Corporation – notes that it has 18 employees.
13. February 2-3, 1972 – TCMinutes – pp. 4-5 – Tribe decides to dissolve Iron Nation Corporation and the partnership with Raven Industries.



**ORDINANCE 06-001**  
**LOWER BRULE SIOUX TRIBE**

**ESTABLISHMENT OF BOYS & GIRLS CLUB OF LOWER BRULE INC.**

***WHEREAS**, the Lower Brule Sioux Tribe is a federally recognized Indian Tribe organized pursuant to the Indian Reorganization Act of 1934; and*

***WHEREAS**, as empowered by the Constitution and Bylaws, Article VI, Section 1, (e), the Tribal Council as authorized by law to safeguard and promote the peace, safety, morals and general welfare of the Lower Brule Sioux Tribe and to regulate the conduct of trade and the use and disposition of property upon the reservation provided that any ordinance directly affecting nonmembers of the reservation shall be subject to review by the Secretary of the Interior; and*

***WHEREAS**, the Ordinance for the establishment of the Boys & Girls Club of Lower Brule Inc. were presented for approval; and*

***NOW THEREFORE BE IT FURTHER RESOLVED**, that the Lower Brule Sioux Tribal Council does hereby approve the Boys & Girls Club of Lower Brule Inc. Ordinance.*

**CERTIFICATION**

*The foregoing Resolution was duly adopted by the Lower Brule Sioux Tribal Council, assembled in Regular Session, with quorum present, on the 1<sup>st</sup> day of February, 2006, by the affirmative vote of five members for, none opposing, none absent and none not voting.*

  
\_\_\_\_\_  
**MICHAEL B. JANDREAU, CHAIRMAN**  
**LOWER BRULE SIOUX TRIBAL COUNCIL**

**ATTEST:**

  
\_\_\_\_\_  
**JOHN MCCAULEY SR., SECRETARY/TREASURER**  
**LOWER BRULE SIOUX TRIBAL COUNCIL**

# GEOCHECK® - PHYSICAL SETTING SOURCE MAP FINDINGS RADON

## AREA RADON INFORMATION

State Database: SD Radon

### Radon Test Results

City	Rm Used	Rm Level	Captured	Measured	Result
Presho	Family room	Basement	01/26/93	01/27/93	7.9
Relaince	Laundry	Basement	01/07/91	01/09/91	55.9
Relaince		Basement	01/13/91	01/16/91	21.7
Relaince	Bedroom	1st Floor	01/13/91	01/16/91	172.6
Relaince	Unfinished	Basement	01/13/91	01/16/91	290.8
Presho	Family room	Basement	01/18/91	01/23/91	10
Kennebec	Storage	Basement	01/21/91	01/24/91	38.3
Relaince	Kilchen	1st Floor	01/22/91	01/23/91	21.8
Relaince	Storage	Basement	01/22/91	01/23/91	86.7
Relaince	Bedroom	1st Floor	01/22/91	01/24/91	67
Relaince	Bedroom	1st Floor	01/22/91	01/24/91	70.8
Relaince	Storage	Basement	02/26/91	02/27/91	10.1
Presho		Basement	02/29/92	03/04/92	11.3
Relaince	Bedroom	Basement	07/20/92	07/24/92	1.2
Vivian	Rec. Room	Basement	07/23/92	07/23/92	5.1
Presho	Storage	Basement	11/26/92	12/01/92	44.3
Presho	Honors Room	Basement	11/28/93	12/03/93	3
Presho	Storage/Furn	Basement	11/28/93	12/03/93	3.8
Presho	Denlse Perry	1st Floor	11/28/93	12/03/93	4.5
Presho	Virginia's	1st Floor	11/28/93	12/03/93	5.6
Presho	Blank		11/29/93	12/03/93	0.1
Presho	Lunchroom	1st Floor	11/29/93	12/03/93	1.4
Presho	North room	1st Floor	11/29/93	12/03/93	3.1
Presho	South room	1st Floor	11/29/93	12/03/93	3.2
Presho	Chyree's	1st Floor	11/29/93	12/03/93	6.7
Presho	English room	1st Floor	11/29/93	12/03/93	7.5
Presho	Science	1st Floor	11/29/93	12/03/93	7.5
Presho	Comp Room	1st Floor	11/29/93	12/03/93	8
Presho	LaVonne's	1st Floor	11/29/93	12/03/93	8.1
Presho	Speech	1st Floor	11/29/93	12/03/93	8.3
Presho	Stacy's	1st Floor	11/29/93	12/03/93	8.6
Presho	Library	1st Floor	11/29/93	12/03/93	8.7
Presho	Kinder	1st Floor	11/29/93	12/03/93	9.5
Presho	Rec. Room	Basement	03/01/93	03/04/93	14.9
Presho	Storage	Basement	07/12/93	07/14/93	6.9
Presho	School room	1st Floor	11/28/93	12/02/93	0.9
Presho	Doug's room	1st Floor	11/28/93	12/03/93	1.2
Presho	Cook storage	1st Floor	11/28/93	12/03/93	1.5
Presho	Storage/Doug	FB room-1st	11/28/93	12/03/93	1.6
Presho	Office	1st Floor	11/28/93	12/03/93	2
Presho	Home Ec	1st Floor	11/28/93	12/03/93	2.1
Presho	Library	1st Floor	11/28/93	12/03/93	2.2
Presho	Kinder room	Basement	11/28/93	12/03/93	2.9
Presho	Living Room	Basement	01/01/94	01/09/94	3.2
Presho	Bedroom	Basement	08/29/95	07/01/95	5.6
Vivian	Furnace	Basement	12/08/97	12/10/97	5.4

## GEOCHECK® - PHYSICAL SETTING SOURCE MAP FINDINGS RADON

### AREA RADON INFORMATION

Presho	Lunchroom	1st Floor	06/03/94	06/18/94	2.8
Presho	Classroom	1st Floor	06/03/94	06/18/94	3
Presho	Office	1st Floor	06/03/94	06/18/94	3.9
Presho	Classroom	1st Floor	06/03/94	06/18/94	4
Presho	Classroom	1st Floor	06/03/94	06/18/94	4.9
Presho	Classroom	1st Floor	06/03/94	06/18/94	5
Presho	Classroom	1st Floor	06/03/94	06/18/94	5.5
Presho	Classroom	1st Floor	06/03/94	06/18/94	5.6
Presho	School Llb	1st Floor	06/03/94	06/18/94	5.9
Presho	Classroom	1st Floor	06/03/94	06/18/94	6.1
Presho	Classroom	1st Floor	06/03/94	06/18/94	6.3
Presho	Classroom	1st Floor	06/13/94	06/18/94	5
Presho	Classroom	1st Floor	06/13/94	06/18/94	5.6
Vivian	Rec. Room	Basement	02/12/95	02/16/95	1.9
Presho	Bedroom	Basement	01/16/04	01/07/04	19.4
Presho	Living Room	Basement	01/16/04	01/17/04	16.4
Presho	Utility Room	Basement	01/16/04	01/17/04	18.8
Presho	Utility room	Basement	01/16/04	01/17/04	18.8
Presho	Bath room	Basement	01/16/04	01/17/04	22.3
Rellance	Storage	Storage	06/13/08	06/17/08	1.7

Federal EPA Radon Zone for LYMAN County: 1

Note: Zone 1 indoor average level > 4 pCi/L.  
 : Zone 2 indoor average level >= 2 pCi/L and <= 4 pCi/L.  
 : Zone 3 indoor average level < 2 pCi/L.

Federal Area Radon Information for Zip Code: 57548

Number of sites tested: 9

Area	Average Activity	% <4 pCi/L	% 4-20 pCi/L	% >20 pCi/L
Living Area - 1st Floor	2.580 pCi/L	80%	20%	0%
Living Area - 2nd Floor	Not Reported	Not Reported	Not Reported	Not Reported
Basement	12.178 pCi/L	56%	22%	22%

# Spill Reports Search

**SOUTH DAKOTA** DEPARTMENT OF ENVIRONMENT & NATURAL RESOURCES

**Spill Reports**

Tier II

TRI

**Search Spills by Attributes:**

ID No:

Status:

Reported Date: (on or before)

Reported Date: (on or after)

Site Name/Responsible Party:

County: Lyman

City (nearest): Lower Brule

Zip Code: 57548

Site type:

Spill Category:

Source Type:

Radius: miles

Zoom To

Layers

Legend

Imagery with Labels

Map Help

ID No	Status	Site Name	Street	City	Material	Source Type	Revi
88.045	C	SD Wheat Growers	Road ditch, rural Lyman County	Lower Brule	Fertilizer	Transportation	JA
92.306	C	John Urban - Missouri River Sheen	Missouri River	Lower Brule	Petroleum	AST	KM
93.043	NFA	BIA- Federal Id # R4060001	Road Shop	Lower Brule	Unleaded Gasoline	UST	DR
94.003	C	Lower Brule Sioux Tribe	1 block South Of Casino / .5 block from High School	Lower Brule	Gasoline	AST	KM

resp party	street
South Dakota Wheat Growers	Road ditch, rural Lyman County
John Urban	Missouri River
Bureau of Indian Affairs	Road Shop
Lower Brule Sioux Tribe	1 block South Of Casino / .5 block from High School
Bureau of Indian Affairs	Crazy Horse Street
South Dakota Wheat Growers	Iron Nation Irrigation Site
EPA LUST Trust Project	Commodities Store
Jerry Christensen	Irrigation Pumps on Corps Land
Army Corps of Engineers	Big Bend Dam
Lower Brule Sioux Tribe	1 College Drive
Lower Brule Sioux Tribe	Education Admin Bldg, BIA Rt. 10
Lower Brule Sioux Tribe	Industrial Lot 3
Lower Brule Sioux Tribe	Glen Allen Ranch @ 15 m W of LB on Hwy 273
West Central Electric	~6.5 miles Nof Lower Brule on BIA 3
Native American Heritage Association	BIA 10, Lower Brule Rubble Site
West Central Electric	Medicine Bull Memorial Highway
Lower Brule Farm Corporation	Grass Rope Unit, Little Bend Road, BIA 3

site name
SD Wheat Growers
John Urban - Missouri River Sheen
BIA- Federal Id # R4060001
Lower Brule Sioux Tribe
BIA - Former Lake Sharpe Service Station - Federal Id # R4060006
Line Break on Transport Truck
EPA LUST Trust Project - Lower Brule Commodities Store
Irrigation Pumps - Surface Spills
Big Bend Powerhouse - Oil leak
ATP - Lower Brule College
ATP - LBST Education Admin Building
ATP - LBST Employment Enterprises
ATP - Glen Allen Ranch
Transformer Spill - Storm Event
Transport Tank Spill - NAHA
Regulator Oil Release - Storm Event
Lower Brule Farm Corporation - Grass Rope Unit

city	zip code	county	latitude	longitude	township	range	section	secq1
Lower Brule	57548	Lyman	44.08529	-99.7454	107	74	8	
Lower Brule	57548	Lyman	44.12463	-99.7539	108N	74W	30	SE
Lower Brule	57548	Lyman	44.06818	-99.5803				
Lower Brule	57548	Lyman	44.07297	-99.5804				
Lower Brule	57548	Lyman	44.07075	-99.5768				
Lower Brule	57548	Lyman	44.11857	-99.7506	108N	74W	31	
Lower Brule	57548	Lyman	44.07254	-99.5781				
Lower Brule	57548	Lyman	44.12698	-99.7889	108	75	26	SE
Lower Brule	57548	Lyman	44.03874	-99.4459	106N	72W		
Lower Brule	57548	Lyman	44.06783	-99.577				
Lower Brule	57548	Lyman	44.068	-99.575				
Lower Brule	57548	Lyman	44.07017	-99.5774				
Lower Brule	57548	Lyman	44.08735	-99.8663				
Lower Brule	57548	Lyman	44.17227	-99.5862	108N	73W	9	SE

proptype	sor type	regulated	cause type	atp no	prcfnumbe	ag no
Other(See Case File)	Transportation	FALSE				
Other(See Case File)	AST	FALSE				
Other(See Case File)	UST	TRUE			3712	
Other(See Case File)	AST	TRUE				
Other(See Case File)	UST	TRUE			3702	
Agricultural	Equipment Failure	FALSE				
Other(See Case File)	UST	TRUE				
Agricultural	Handling	FALSE			4071	
Industrial	Equipment Failure	FALSE				
Other(See Case File)	UST	FALSE		2908	6969	
Other(See Case File)	UST	FALSE		2900	6946	
Other(See Case File)	UST	TRUE		2738	6701	
Agricultural	UST	FALSE		2901	6947	
Other(See Case File)	Transformer	FALSE				
Other(See Case File)	Transportation	FALSE			7730	
Other(See Case File)	Regulator	FALSE	Storm Event			
Agricultural	UST	TRUE				

acreage	instctrls	material	amount	units	spill cat	site type
0		Fertilizer	250	gallons	Agri Chem	Other(See
0		Petroleum	50	gallons	Petroleum	Other(See
0		Unleaded Gasoline	0		Petroleum	Federal
0		Gasoline	8500	gallons	Petroleum	Other(See
0		gasoline	0		Petroleum	Federal
0		diesel fuel	500	gallons	Petroleum	Other(See
0		gasoline	0		Petroleum	Lust Trust
0		petroleum	0		Petroleum	Other(See
0		oil	20	gallons	Oil	Federal
0		Fuel Oil	0		Petroleum	ATP
0		Fuel Oil	0		Petroleum	ATP
0		Gasoline & Diesel	0		Petroleum	ATP
0		Gasoline	0		Petroleum	ATP
0		Transformer Oil	75	gallons	Oil	Non_Aquif
0		Diesel	300	gallons	Petroleum	Other(See
		Coolant Oil (non PCB)	320	gallons	Oil	Other(See
0			0		Other(See	Clean Site

TANKS DATABASE VIEWER

South Dakota Department of Environment and Natural Resources

Matching: Lower Brule

Clear Search

Search by Attributes:

County  City  All Fields

Active/Inactive

Search: \_\_\_\_\_

Find Facilities Select All Facilities

Export Data

Search by Buffer:

Buffer Distance in Miles:

60 SetBuffer

Click map to buffer

Clear Buffer

---

Search Results:

Matching: Lower Brule

Tank Info DEPT OF INTERIOR, BUREAU OF INDIAN AFFAIRS, LOWER BRULE, SD

Tank Info B.I.A. ROADS COMPLEX BLDG 343 LOWER BRULE, SD

Tank Info LAKE SHARPE SERVICE LOWER BRULE, SD

Tank Info SUDS N

GRUBLOWER BRULE, SD



FACILITY OVERVIEW

Facility Number: 45-00034

Facility Name: LBST EMPLOYMENT ENTERPRISE

AST/UST: Undergr Storage

OWNER: LOWER BRULE SIOUX TRIBE

Address: 187 OYATE CIRCLE

City: LOWER BRULE

FACILITY TANK INFORMATION

Num	Status	Product	Capacity	Year Installed	Year Removed	Construct	Piping Mat	Piping Type	RD	Piping RD	Spill Prot	Over Prot	TI Inspected By
1	Removed	Diesel	1000	1900	2005	Steel	Steel						
2	Removed	Gasoline	1000	1900	2005	Steel	Steel						

**arch Results:****Matching: Lower Brule**

Tank Info	<b>DEPT OF INTERIOR, BUREAU OF INDI</b> LOWER BRULE, SD
Tank Info	<b>B.I.A. ROADS COMPLEX BLDG 343</b> LOWER BRULE, SD
Tank Info	<b>LAKE SHARPE SERVICE</b> LOWER BRULE, SD
Tank Info	<b>SUDS N GRUB</b> LOWER BRULE, SD
Tank Info	<b>LOWER BRULE FARM CORPORATION</b> LOWER BRULE, SD
Tank Info	<b>TRIBAL COMMODITY STORE</b> LOWER BRULE, SD
Tank Info	<b>LBST EMPLOYMENT ENTERPRISE</b> LOWER BRULE, SD
Tank Info	<b>KUL WISCASA OYATE</b> LOWER BRULE, SD



https://iaspub.epa.gov/enviro/efsystemquery.multisystem?fac\_search=primary\_name&fac\_value=&fac\_search\_type=Beginning+With&postal\_code=57548&location\_address=187+Oyate+Circle&ad...&city\_name=Lower+Brule&county\_name=Lyman&state\_code=SD&TribalLand=0&TribeType=selectTribeALL&selectTribe=143&selectTribe=noselect&tribedistance=1&enlLand&sic\_type=Equal+to&sic\_code\_to=&naics\_type=Equal+to&naics\_to=&chem\_name=&chem\_search=Beginning+With&cas\_num=&page\_no=1&output\_sql\_switch=FALSE&report\_type=Multisystem



## Search Results

<< Return

**Search Parameters:** ZIP Code: 57548  
**Location Address:** 187 Oyate Circle  
**City Name:** Lower Brule  
**County Name:** Lyman  
**State Abbreviation:** SD

**Envirofacts Links**

- [EF Overview](#)
- [Search](#)
- [Model](#)
- [Data Update](#)
- [Multisystem Search User Guide](#)
- [Contact Us](#)



**On Lower Brule Sioux Tribe of the Lower Brule Reservation, South Dakota**

**Total Number of Facilities Retrieved: 0**

EPA makes no claims regarding the accuracy or precision of data concerning Indian country locations or boundaries on the Envirofacts website. EPA has simply attempted to collect certain readily available information relating to Indian country locations. Questions concerning data should be referred to the originating program or Agency which can be identified in the Envirofacts tribal query metadata files [Lower48 Tribal Areas](#), [Alaska Reservation](#), [Alaska Native Villages](#), or [Alaska Native Allotments](#). The Indian country locations shown here are suitable only for general spatial reference and do not necessarily reflect EPA's position on any Indian country locations or boundaries or the land status of any specific location. The inclusion of Indian country information on the Envirofacts website does not represent any final EPA action addressing Indian country locations or boundaries. This information cannot be relied upon to create any rights, substantive or procedural, enforceable by any party in litigation with the United States or third parties. EPA reserves the right to change information on Envirofacts at any time without public notice.

EPA uses the US Census Bureau 2016 tribal boundary layer data when developing environmental data query responses for tribes in the lower 48 United States. The tribal boundary locations identified are suitable only for general spatial reference and do not necessarily reflect EPA's position on any Indian country locations or boundaries, or the land status of any specific location. EPA seeks to use the best available national federal data and may refine the tribal boundary layer in the future as more accurate national federal data becomes available.

Last updated on 5/23/2017



More Details

Brownfields Property Progress Profile



- [Facility Information \(Facility Registry System\)](#)
- [Other Names for this Site](#)
- [Brownfields Grant Fact Sheet\(s\)](#)

DURKIN CURVE  
Property ID: 219317  
[Other Names for this Site](#)

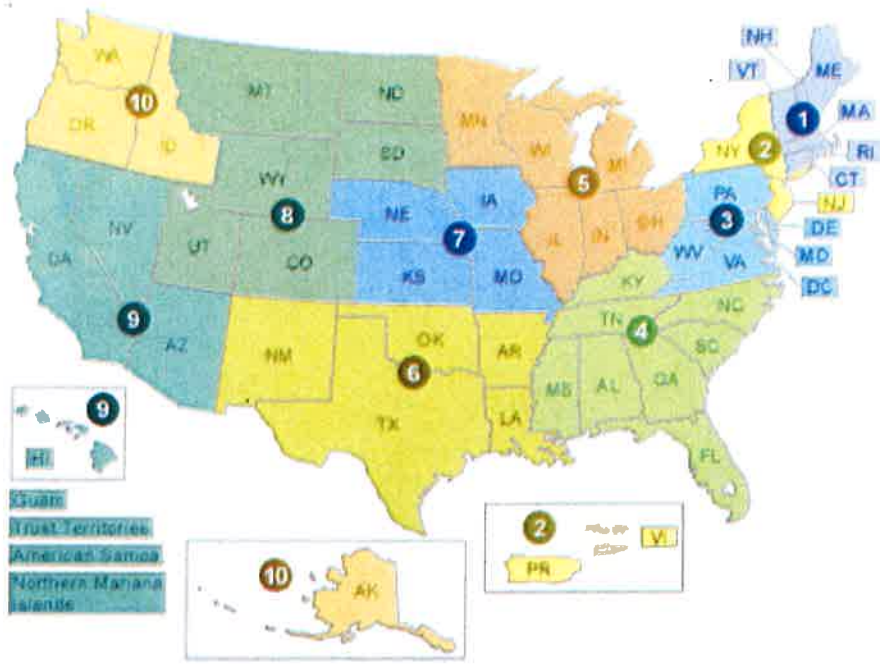
This profile provides a summary of the accomplishments reported to the US EPA by a Brownfields grant recipient or Targeted Brownfields Assessment Contractor at this Brownfields property.

[Legal Notices](#)

Property Location

Assessment & Cleanup Activities and Progress Summary

Assessment & Cleanup Results and Impact Summary



Select a State

After you select a link, press go to jump to Superfund sites for that State.

**Go**

Region 8 Selected

**Show All Regions**

State of South Dakota Selected

**Show All States**

Show  entries

Search:

Region	City	County	State	Zip Code	Site Name
+ 8	ELLSWORTH AFB	[Blank County]	South Dakota	57706	<u>ELLSWORTH AIR FORCE BASE</u>
+ 8	LEAD	LAWRENCE	South Dakota	57754	<u>GILT EDGE MINE</u>
+ 8	WHITEWOOD	LAWRENCE	South Dakota	57793	<u>WHITEWOOD CREEK</u>



You are here: [EPA Home](#) [Cleanups](#) Cleanups In My Community (CIMC)

## Cleanups In My Community List Results

This is a list of only the sites, properties and facilities which reside within the boundaries of the geographic area you have specified and which meet the criteria you have specified.

\*Click on the column header to sort in ascending or descending order.

\*To directly view any profiles and reports available for a cleanup, click on the associated report(s) found in the "Reports Available" column.

\*To see a map on a cleanup, click on the "Map It" link found in the "Map Site" column.

**Search Criteria: Postal Code is 57548.**

[Click Here to Redefine Search Criteria](#)

Define Your Community:

**List It**

[View Cleanups](#)

[Brownfields Grants Jurisdictions](#)

CIMC Sites Basic Filters

CIMC Sites Advanced Filters

CIMC Brownfields Gr

Show/Hide All Cleanups

**Brownfields Properties**

Assessment Grants

Assessment Pilots

Cleanup Grants

RLF Grants

RLF Pilots

Multi-Purpose Grants

Area-Wide Grants

State and Tribal

128(a) Grants

Targeted Brownfields Assessments

**RCRA Hazardous Waste - Corrective Actions**

Si

Current Corrective Action

Remedy Selected

Construction Complete

Remedy Action Complete

Remedy Not Yet Selected

## Results List

<u>Cleanup Name</u> 	<u>Location Address</u>	<u>City Name</u>	<u>State Code</u>	<u>Postal Code</u>	<u>County Name</u>	<u>Reports Available</u>	<u>Map Site</u>
DURKIN CURVE	31138 HIGHWAY 1806	LOWER BRULE	SD	57548	LYMAN COUNTY	<a href="#">Brownfields</a>	<a href="#">Map It</a>
FORMER BIA ADMINISTRATION BUILDING	90001 RED CLOUD STREET	LOWER BRULE	SD	57548	LYMAN	<a href="#">Brownfields</a>	<a href="#">Map It</a>
FORMER BIA JAIL	TRIBAL HWY 10	LOWER BRULE	SD	57548	LYMAN	<a href="#">Brownfields</a>	<a href="#">Map It</a>
FORMER HOUSING AUTHORITY BUILDING	633 CRAZY HORSE STREET	LOWER BRULE	SD	57548	LYMAN	<a href="#">Brownfields</a>	<a href="#">Map It</a>
KIDS POND	0.8 MILES SW OF LOWER BRULE	LOWER BRULE	SD	57548	LYMAN	<a href="#">Brownfields</a>	<a href="#">Map It</a>
RODEO DUMP	729 POW WOW HIGHWAY	LOWER BRULE	SD	57548	LYMAN	<a href="#">Brownfields</a>	<a href="#">Map It</a>
RODEO GROUNDS DUMP	????	LOWER BRULE	SD	57548	LYMAN	<a href="#">Brownfields</a>	<a href="#">Map It</a>

row(s) 1 - 7 of 7

**Close Window**

**Click for More  
Brownfields Info**

**\* Export to CSV**

**Legal Notices**

\* Date Last Updated: 04/19/2017

\* Note: We have found that in some cases, characters such as a dash (-) might be mis-interpreted by Excel, resulting in strange "Unicoda" characters. We have corrected this problem with regards to Windows. However, to avoid the strange "Unicoda" characters



Related Topics: [Envirofacts](#)

FRS

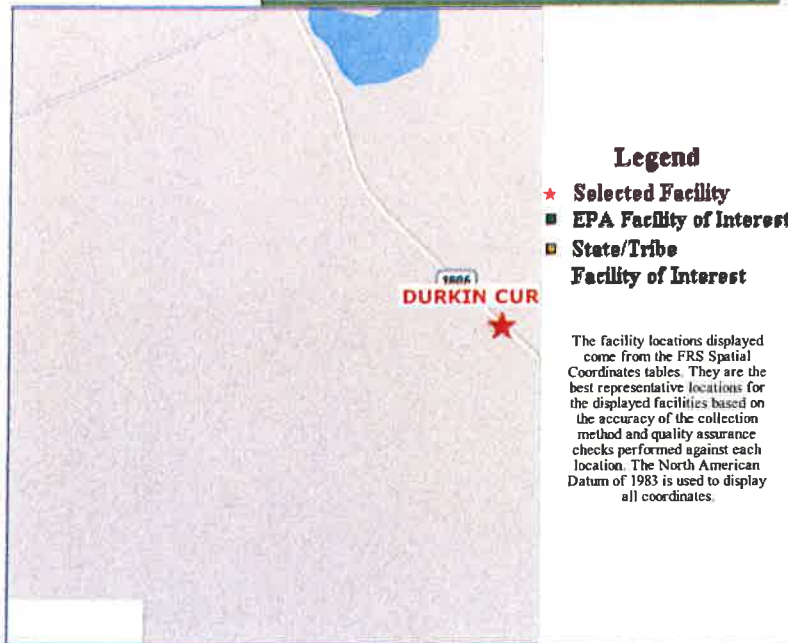
## FRS Facility Detail Report

### DURKIN CURVE

**EPA Registry Id:**  
110070004655  
31138 HIGHWAY 1806  
LOWER BRULE, SD  
57548

### Facility Registry Service Links:

- [Facility Registry Service \(FRS\) Overview](#)
- [FRS Facility Query](#)
- [FRS Organization Query](#)
- [EZ Query](#)
- [FRS Physical Data Model](#)
- [FRS Geospatial Model](#)



### Environmental Interests

Information System	System Facility Name	Information System Id/Report Link	Environmental Interest Type	Data Source	Last Updated Date
ASSESSMENT, CLEANUP AND REDEVELOPMENT EXCHANGE SYSTEM	DURKIN CURVE	219317	BROWNFIELDS PROPERTY	ACRES	11/23/2016

Additional EPA Reports: [MyEnvironment](#) [Site Demographics](#) [Facility Coordinates Viewer](#) [Environmental Justice Map Viewer](#) [Watershed Report](#)

Standard Industrial Classification Codes (SIC)

No SIC Codes returned.			
<b>Facility Codes and Flags</b>			
EPA Region:	08	<b>National Industry Classification System C</b>	
Duns Number:		No NAICS Codes returned.	
Congressional District Number:	01	<b>Facility Mailing Addresses</b>	
Legislative District Number:		No Facility Mailing Addresses returned.	
HUC Code/Watershed:	10140101 / FORT RANDALL RESERVOIR	<b>Contacts</b>	
US Mexico Border Indicator:		Affiliation Type	Full Name
Federal Facility:		REGIONAL DATA ENTRY	WILLIAM ROTHENMEYER
Tribal Land:	NO	Information System	303-312-60
<b>Alternative Names</b>			
No Alternative Names returned.			
<b>Organizations</b>			
Affiliation Type	Name	DUNS Number	Information System Mailing Address
OWNER/OPERATOR	LOWER BRULE SIOUX TRIBE	ACRES	

Query executed on: MAY-11-2017

Last updated on September 24, 2015

type=Environmental&fac\_code\_to=&naics\_type=Equal+to&naics\_to=&chem\_name=&chem\_search=Beginning+With&cas\_num=&page\_no=1&output\_sql\_switch=FALSE&report=1&database\_type=Multisystem



# Envirofacts Search Results

<< Return

**Search Parameters: ZIP Code:** 57548  
**Location Address:** 187 Oyate Cicle  
**City Name:** Lower Brule  
**County Name:** South Dakota  
**State Abbreviation:** South Dakota  
**Any Tribe and a 10 mile area surrounding the Tribe**

### Envirofacts Links

- [EF Overview](#)
- [Search](#)
- [Model](#)
- [Data Update](#)
- [Multisystem Search User Guide](#)
- [Contact Us](#)

Report an Error

**Total Number of Facilities Retrieved:** 0

EPA makes no claims regarding the accuracy or precision of data concerning Indian country locations or boundaries on the Envirofacts website. EPA has simply attempted to collect certain readily available information relating to Indian country locations. Questions concerning data should be referred to the originating program or Agency which can be identified in the Envirofacts tribal query metadata files [Lower48 Tribal Areas](#), [Alaska Reservation](#), [Alaska Native Villages](#), or [Alaska Native Allotments](#) . The Indian country locations shown here are suitable only for general spatial reference and do not necessarily reflect EPA's position on any Indian country locations or boundaries or the land status of any specific location. The inclusion of Indian country information on the Envirofacts website does not represent any final EPA action addressing Indian country locations or boundaries. This information cannot be relied upon to create any rights, substantive or procedural, enforceable by any party in litigation with the United States or third parties. EPA reserves the right to change information on Envirofacts at any time without public notice.

EPA uses the US Census Bureau 2016 tribal boundary layer data when developing environmental data query responses for tribes in the lower 48 United States. The tribal boundary locations identified are suitable only for general spatial reference and do not necessarily reflect EPA's position on any Indian country locations or boundaries, or the land status of any specific location. EPA seeks to use the best available national federal data and may refine the tribal boundary layer in the future as more accurate national federal data becomes available.

Last updated on 5/11/2017



https://efaspub.epa.gov/enviro/efsystemquery.sems?fac\_search=primary\_name&fac\_value=&fac\_search\_type=Beginning&postal\_code=57548&location\_address...&city\_name=Lower+Brule&county\_name=Lyman&state\_code=SD&NPL=YES&program\_search=multi&report=basic&page\_no=1&output\_sql\_switch=TRUE&database\_type=SEMS



## Envirofacts Search Results



Consolidated facility information (from multiple EPA systems) was searched to select facilities

[<< Return](#)

**Search Parameters: ZIP Code: 57548**  
**City Name: Lower Brule**  
**County Name: Lyman**  
**State Abbreviation: SD**  
**Select National Priority List Sites Only NPL**

Results are based on data extracted on OCT-13-2016

**No Results found.**

Last updated on 5/11/2017



# Envirofacts Search Results



## List of Facilities Reporting to BR in Envirofacts

The Hazardous Waste Report (Biennial Report) collects data on the generation, management, and minimization of hazardous waste. This provides detailed data on the generation of hazardous waste from large quantity generators and data on waste management practices from treatment, storage, and disposal facilities. The Biennial Report data provide a basis for trend analyses. Data about hazardous waste activities is reported for odd number years (beginning with 1989) to EPA. EPA then provides reports on hazardous waste generation and management activity that accompany the data files. You may use a variety of data retrieval options in the [Biennial Report Search](#) to search for other facilities that interest you. Information on related [laws and regulations](#) is also available.

*\*Zoom or pan map to change location.*



BR Links

- [Overview](#)
- [Search](#)
- [Model](#)
- [BR Search User Guide](#)
- [Contact Us](#)
- [Office of Resource Conservation and Recovery Home](#)

[Report an Error](#)

**Search Results for:**

57548 Lower Brule SD \*

*\*The location searched was too large for detailed viewing. We've zoomed in on the map so that greater detail can be seen. You can navigate within the map to view additional facilities.*

*\*The search results are based upon the facilities that are visible within the map above. To refine your search to a more targeted area of interest, please visit the [BR Search Form](#). To search Envirofacts via an interactive map, please view your results in [EnviroMapper for Envirofacts](#)*

FACILITY NAME	STREET ADDRESS	CITY NAME	COUNTY	STATE	ZIP CODE	REPORTING YEAR
KMART 9273 (CLOSED) <a href="#">Summary Report</a>	1615 NORTH HARRISON AVENUE	PIERRE	HUGHES	SD	57501	2015
MIDWEST COOPERATIVES <a href="#">Summary Report</a>	1919 EAST SIOUX AVENUE/ PO BOX 787	PIERRE	HUGHES	SD	575014079	2009

Total Facilities Returned: 2

[Return to more topical information](#)

https://oaspub.epa.gov/enviro/RCRAINFOQuery.list?

minx=-102.150879&miny=43.484812&maxx=-98.305664&maxy=45.367584&ve=7,44.436134338378885,-100.23052978515625&pSearch=57548%20Lower%20Brule%20SD



# Envirofacts Search Results



## List of Facilities Reporting to RCRAInfo in Envirofacts

Hazardous waste information is contained in the Resource Conservation and Recovery Act Information (RCRAInfo), a national program management and inventory system about hazardous waste handlers. In general, all generators, transporters, treaters, storers, and disposers of hazardous waste are required to provide information about their activities to state environmental agencies. These agencies, in turn pass on the information to regional and national EPA offices. This regulation is governed by the Resource Conservation and Recovery Act (RCRA), as amended by the Hazardous and Solid Waste Amendments of 1984. You may use the [Hazardous Waste Search](#) to determine identification and location data for specific hazardous waste handlers, and to find a wide range of information on treatment, storage, and disposal facilities regarding permit/closure status, compliance with Federal and State regulations, and cleanup activities. There is also information on related [Laws and regulations](#).

\*Zoom or pan map to change location.



RCRAInfo Links

- [Overview](#)
- [Search](#)
- [Model](#)
- [RCRAInfo Search User Guide](#)
- [Contact Us](#)
- [Office of Resource Conservation and Recovery Home](#)

[Report an Error](#)

**Search Results for:**

57548 Lower Brule SD \*

*\*The location searched was too large for detailed viewing. We've zoomed in on the map so that greater detail can be seen. You can navigate within the map to view additional facilities.*

The data within the table below can be downloaded in a comma-separated value file for use in Excel by clicking

here:

*\*The search results are based upon the facilities that are visible within the map above. To refine your search to a more targeted area of interest, please visit the [RCRAInfo Search Form](#). To search Envirofacts via an interactive map, please view your results in [EnviroMapper for Envirofacts](#)*

FACILITY NAME	STREET ADDRESS	CITY NAME	COUNTY	STATE	ZIP CODE	LATITUDE/LONGITUDE
AGAR SCHOOL DISTRICT 58-1 <a href="#">Detailed Report</a>	101 PINE STREET	AGAR	SULLY	SD	57520	44.83931/-100.07532
AJ'S REPAIR <a href="#">Detailed Report</a>	218 E. PLEASANT AVE	PIERRE	HUGHES	SD	57501	44.367436/-100.351413
AUTO PARTS PROFESSIONALS INCORPORATED <a href="#">Detailed Report</a>	706 NORTH DEADWOOD STREET	FORT PIERRE	STANLEY	SD	575320352	44.358022/-100.374132
AVERA ST. MARY'S HEALTHCARE CENTER <a href="#">Detailed Report</a>	801 EAST SIOUX AVENUE	PIERRE	HUGHES	SD	57501	44.36127/-100.34224
BECK MOTORS INC <a href="#">Detailed Report</a>	500 SOUTH GRANT	PIERRE	HUGHES	SD	57501	44.35982/-100.3192
BECK MOTORS INC. - BODY SHOP <a href="#">Detailed Report</a>	1400 NORTH GARFIELD	PIERRE	HUGHES	SD	57501	44.38206/-100.31449
BUHLS LAUNDRY & DRY CLEANERS INC <a href="#">Detailed Report</a>	320 WEST DAKOTA	PIERRE	HUGHES	SD	57501	44.367283/-100.357903

FACILITY NAME	STREET ADDRESS	CITY NAME	COUNTY	STATE	ZIP CODE	LATITUDE/LONGITUDE
BUTLER MACHINERY COMPANY <a href="#">Detailed Report</a>	801 GARFIELD	PIERRE	HUGHES	SD	57501	44.35392/-100.31602
CENTURY BUSINESS PRODUCTS INC <a href="#">Detailed Report</a>	112 EAST DAKOTA	PIERRE	HUGHES	SD	57501	44.365566/-100.354877
CENTURY MFG CO <a href="#">Detailed Report</a>	3605 AIRPORT ROAD	PIERRE	HUGHES	SD	57501	44.382121/-100.296892
DRUG ENFORCEMENT AGENCY <a href="#">Detailed Report</a>	210 WEST PLEASANT	PIERRE	HUGHES	SD	57501	44.368904/-100.353966
FARMERS UNION OIL COMPANY <a href="#">Detailed Report</a>	123 FIRST WEST	HIGHMORE	HYDE	SD	57345	44.52033/-99.44331
FEDERAL EXPRESS CORPORATION <a href="#">Detailed Report</a>	225 WEST SIOUX AVE	PIERRE	HUGHES	SD	57501	44.367689/-100.355388
FORMER PIERRE CITY AUDITORIUM <a href="#">Detailed Report</a>	222 EAST SIOUX AVENUE	PIERRE	HUGHES	SD	57501	44.365803/-100.352057
FPL ENERGY SOUTH DAKOTA WIND LLC <a href="#">Detailed Report</a>	33716 207TH STREET	HIGHMORE	HYDE	SD	57345	44.382467/-99.435105
GARY SNOW & ASSOCIATES, INC. - WAREHOUSE <a href="#">Detailed Report</a>	614 S. ROOSEVELT AVE	PIERRE	HUGHES	SD	57501	44.358026/-100.311406
GENERAL TRADING COMPANY <a href="#">Detailed Report</a>	410 EAST SIOUX AVE	PIERRE	HUGHES	SD	57501	44.364484/-100.349745
GRAHAM TIRE - GOOD YEAR AUTO SERVICE CEN <a href="#">Detailed Report</a>	421 W. SIOUX AVE - PO BOX 516	PIERRE	HUGHES	SD	57501	44.369158/-100.357942
KMART 9273 (CLOSED) <a href="#">Detailed Report</a>	1615 NORTH HARRISON AVENUE	PIERRE	HUGHES	SD	57501	44.377713/-100.317664
LAMB CHEVROLET & IMPLEMENT INC. <a href="#">Detailed Report</a>	18500 US HIGHWAY 83	ONIDA	SULLY	SD	57564	44.70766/-100.08052
LOWER BRULE SIOUX TRIBE <a href="#">Detailed Report</a>	PO BOX 807	LOWER BRULE	LYMAN	SD	57548	44.069222/-99.566778
MIDWEST COOPERATIVES <a href="#">Detailed Report</a>	1919 EAST SIOUX AVENUE/ PO BOX 787	PIERRE	HUGHES	SD	575014079	44.357222/-100.322222
MORRIS IRRIGATION INC <a href="#">Detailed Report</a>	510 WEST HWY 34	FORT PIERRE	STANLEY	SD	57532	44.371011/-100.387435
MORRIS, INC. <a href="#">Detailed Report</a>	4150 EAST HWY 34	PIERRE	HUGHES	SD	57501	44.36746/-100.29649
NORWEST BANK PIERRE NA <a href="#">Detailed Report</a>	215 WEST SIOUX AVENUE	PIERRE	HUGHES	SD	575016180	44.36761/-100.355251
PIERRE FARMERS ELEVATOR ASSN <a href="#">Detailed Report</a>	1020 EAST SIOUX	PIERRE	HUGHES	SD	57501	44.360611/-100.338794
SD BUREAU OF ADMIN BUILDINGS AND GROUNDS <a href="#">Detailed Report</a>	303 EAST DAKOTA AVENUE	PIERRE	HUGHES	SD	57501	44.364145/-100.352394
SD DEPT OF TRANSPORTATION_IRA <a href="#">Detailed Report</a>	700 EAST BROADWAY AVENUE	PIERRE	HUGHES	SD	57501-2586	44.366757/-100.342435
SD DOA - DIV OF FORESTRY <a href="#">Detailed Report</a>	445 E CAPITOL AVENUE	PIERRE	HUGHES	SD	57501	44.366504/-100.347197
SD DOA - REGULATORY SERVICES <a href="#">Detailed Report</a>	445 E CAPITOL AVENUE	PIERRE	HUGHES	SD	57501	44.366504/-100.347197
SD DOH - HEALTH LAB <a href="#">Detailed Report</a>	500 EAST CAPITAL	PIERRE	HUGHES	SD	57501	44.365673/-100.345705
SD DOH - HEALTH LABORATORY <a href="#">Detailed Report</a>	615 EAST FOURTH STREET	PIERRE	HUGHES	SD	57501-1700	44.378334/-100.337731
SD DOT - BUILDING B <a href="#">Detailed Report</a>	104 SOUTH GARFIELD	PIERRE	HUGHES	SD	57501	44.364215/-100.316508
SNAPPY DELIVERY <a href="#">Detailed Report</a>	1823 EAST DAKOTA AVENUE	PIERRE	HUGHES	SD	57501	44.357313/-100.327267
SOUTH DAKOTA ASSOCIATION OF REALTORS <a href="#">Detailed Report</a>	120 NORTH EUCLID	PIERRE	HUGHES	SD	57501	44.368667/-100.35045
SOUTH DAKOTA DEPT. OF AGRICULTURE BAIT STATION <a href="#">Detailed Report</a>	4075 AIRPORT ROAD	PIERRE	HUGHES	SD	57501	44.377128/-100.290513
STATE PUBLISHING CO <a href="#">Detailed Report</a>	303 EAST SIOUX AVENUE	PIERRE	HUGHES	SD	57501	44.365303/-100.351181
TRANSPORTATION SECURITY ADMIN. (TSA) PIR <a href="#">Detailed Report</a>	4001 AIRPORT ROAD	PIERRE	HUGHES	SD	57501-5606	44.377376/-100.290797

FACILITY NAME	STREET ADDRESS	CITY NAME	COUNTY	STATE	ZIP CODE	LATITUDE/LONGITUDE
TSA @ PIERRE REGIONAL AIRPORT (PIR) <a href="#">Detailed Report</a>	3800 AIRPORT ROAD	PIERRE	HUGHES	SD	57501	44.380042/-100.293859
USCOE - BIG BEND DAM <a href="#">Detailed Report</a>	HIGHWAY 47	FORT THOMPSON	BUFFALO	SD	57339	44.06/-99.454167
USCOE - OAHE DAM <a href="#">Detailed Report</a>	28563 POWERHOUSE ROAD ROOM 105	PIERRE	HUGHES	SD	57501-7100	44.525971/-100.423788
WAL-MART STORE #1685 <a href="#">Detailed Report</a>	1600 NORTH HARRISON AVENUE	PIERRE	HUGHES	SD	57501	44.377586/-100.317936
WALMART SUPERCENTER #1685 <a href="#">Detailed Report</a>	1730 NORTH GARFIELD ROAD	PIERRE	HUGHES	SD	57501	44.390144/-100.314018
WEGNER AUTO CO <a href="#">Detailed Report</a>	330 EAST SIOUX	PIERRE	HUGHES	SD	57501	44.36507/-100.350774

Total Facilities Returned: 44

---

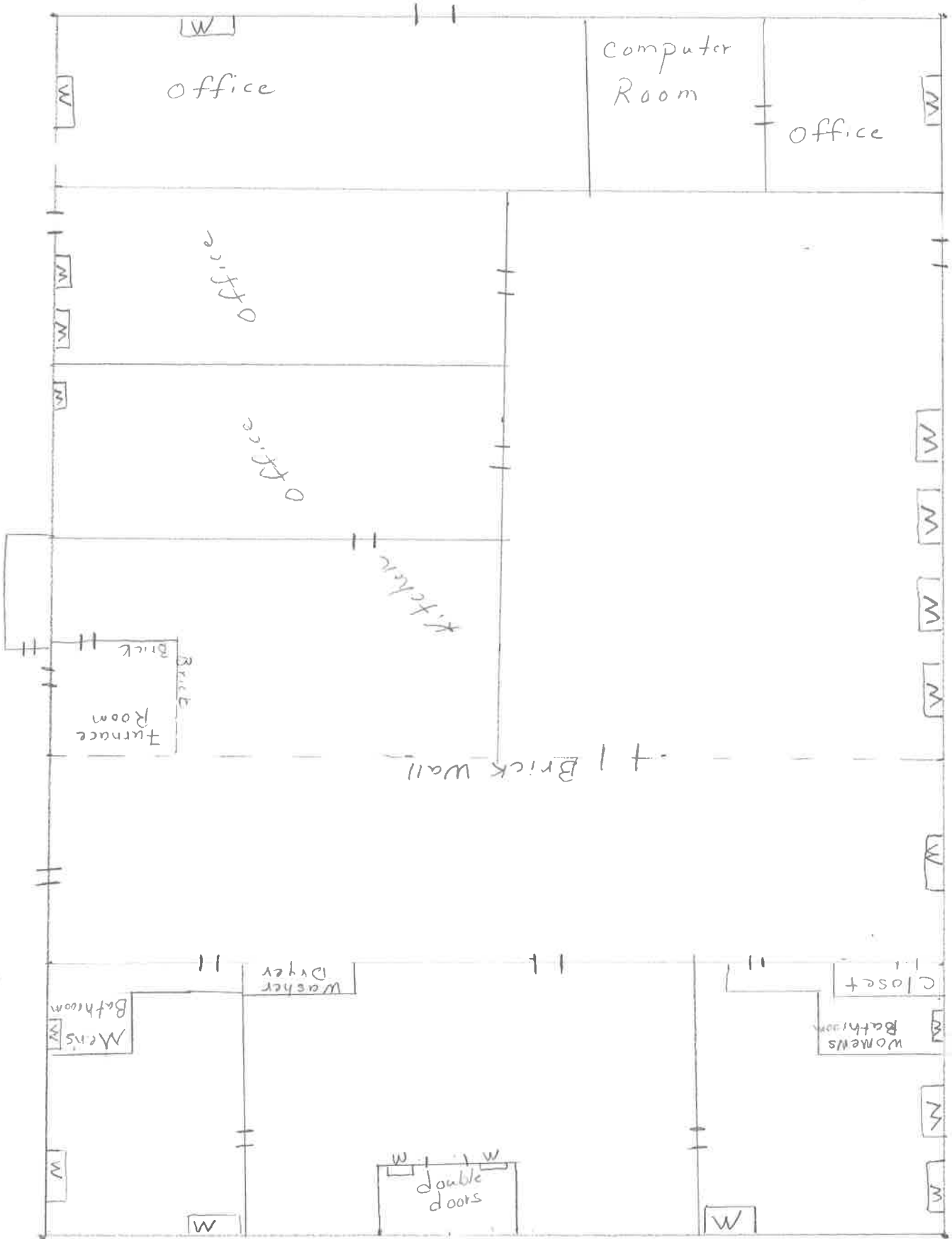
[Return to more topical information](#)

Last updated on 5/11/2017

West Golden Buffalo Casino

South Wells Fargo Bank

South



101 X 48 = 4848  
48 X 84 = 4032

North Post office

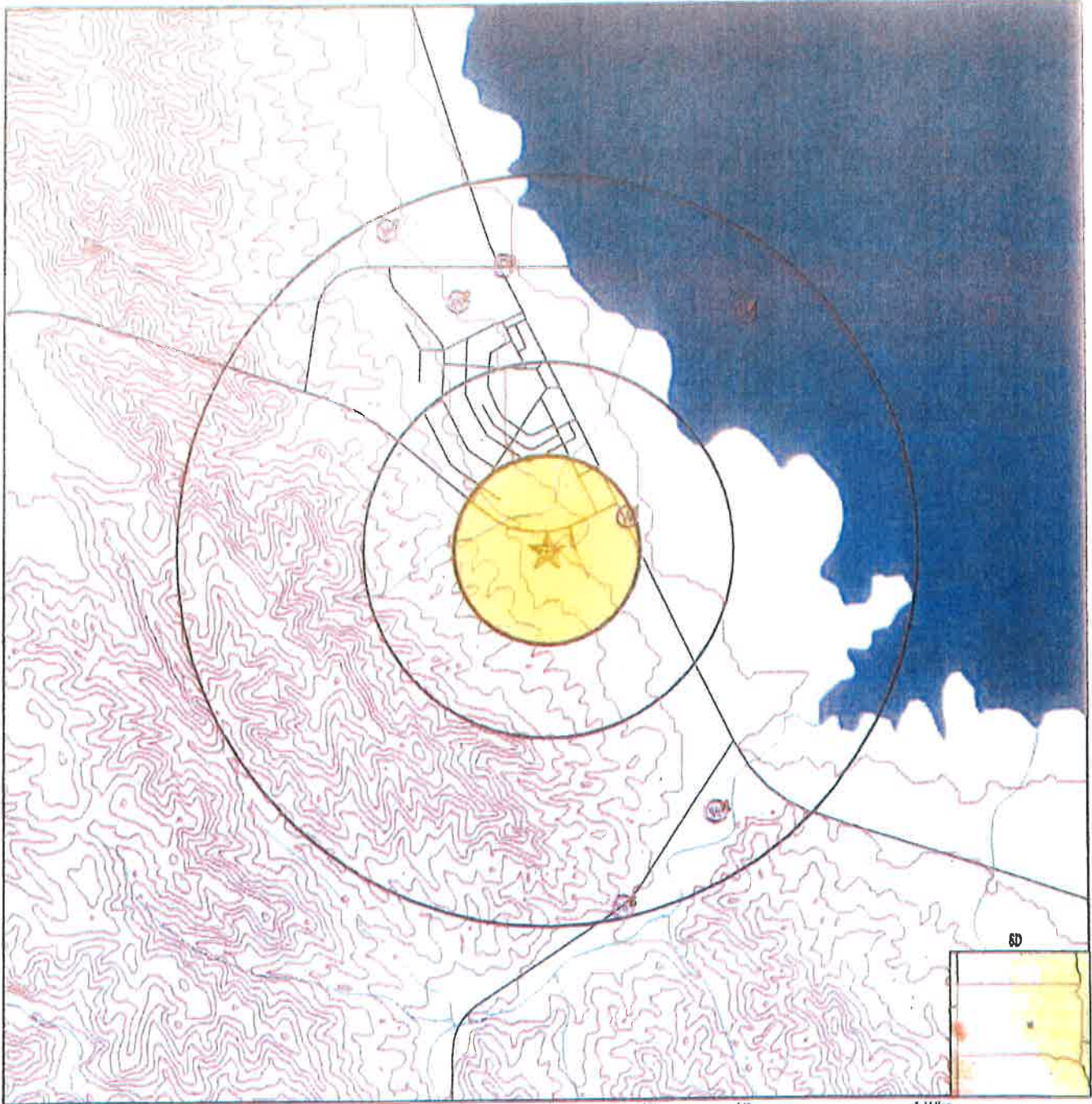
East  
BIA Hwy 10 / Missouri River



**1976 USGS Aerial Photograph**  
**Lower Brule**  
**Location of Old Electronics Building**



PHYSICAL SETTING SOURCE MAP - 3211503.2s



- County Boundary
- Major Roads
- Contour Lines
- Earthquake epicenter, Richter 5 or greater
- Water Wells
- Public Water Supply Wells
- Cluster of Multiple Icons

- Groundwater Flow Direction
- Indeterminate Groundwater Flow at Location
- Groundwater Flow Verifies at Location

SITE NAME: Former BIA Jail  
 ADDRESS: BIA Hwy 10  
 Lower Brule SD 57548  
 LAT/LONG: 44.0670 / 99.5780

CLIENT: Geotek Eng. & Testing Services  
 CONTACT: Linda Watts  
 INQUIRY #: 3211503.2s  
 DATE: November 21, 2011 3:46 pm





2016 USGS Aerial Photograph  
Lower Brule

Location of Old Electronics Building

0 500 1,000 Feet

UNITED STATES DEPARTMENT OF THE INTERIOR  
BUREAU OF INDIAN AFFAIRS  
Lower Brule Agency  
190 Oyate Circle  
Lower Brule, South Dakota 57548  
(605) 473-5900

Boys & Girls Club



343 T-4030 Located within the SW $\frac{1}{4}$ SE $\frac{1}{4}$ SE $\frac{1}{4}$ NW $\frac{1}{4}$  of Section 15, Township 107 North, Range 73 West, Fifth Principal Meridian, Lyman County, South Dakota, containing 2.50 acres, more or less.



**Boys & Girls Club**  
**131 Sitting Bull Street**  
**Lower Brule, SD 57548**

Prepared by: KW  
Date: 5/2/17



The creation of the maps is intended to provide location only. These lines are not based on a Cadastral Survey, they are derived from GIS databases.

#11

Pictures Building Built 1965

MAY 1966



Cal-Dak Electronics assembly building



**CAL-DAK ELECTRONICS ASSEMBLY BUILDING**  
LOWER BRULE TRIBAL PROJECT  
FOUR SPACES: 10,000 sq. ft.  
MOORE CITY, ND 58543  
2575-2580-2585  
CAL-DAK ELECTRONICS  
FUNDING AGENCY: BUREAU OF INDIAN AFFAIRS  
MINNAPAC CORP.





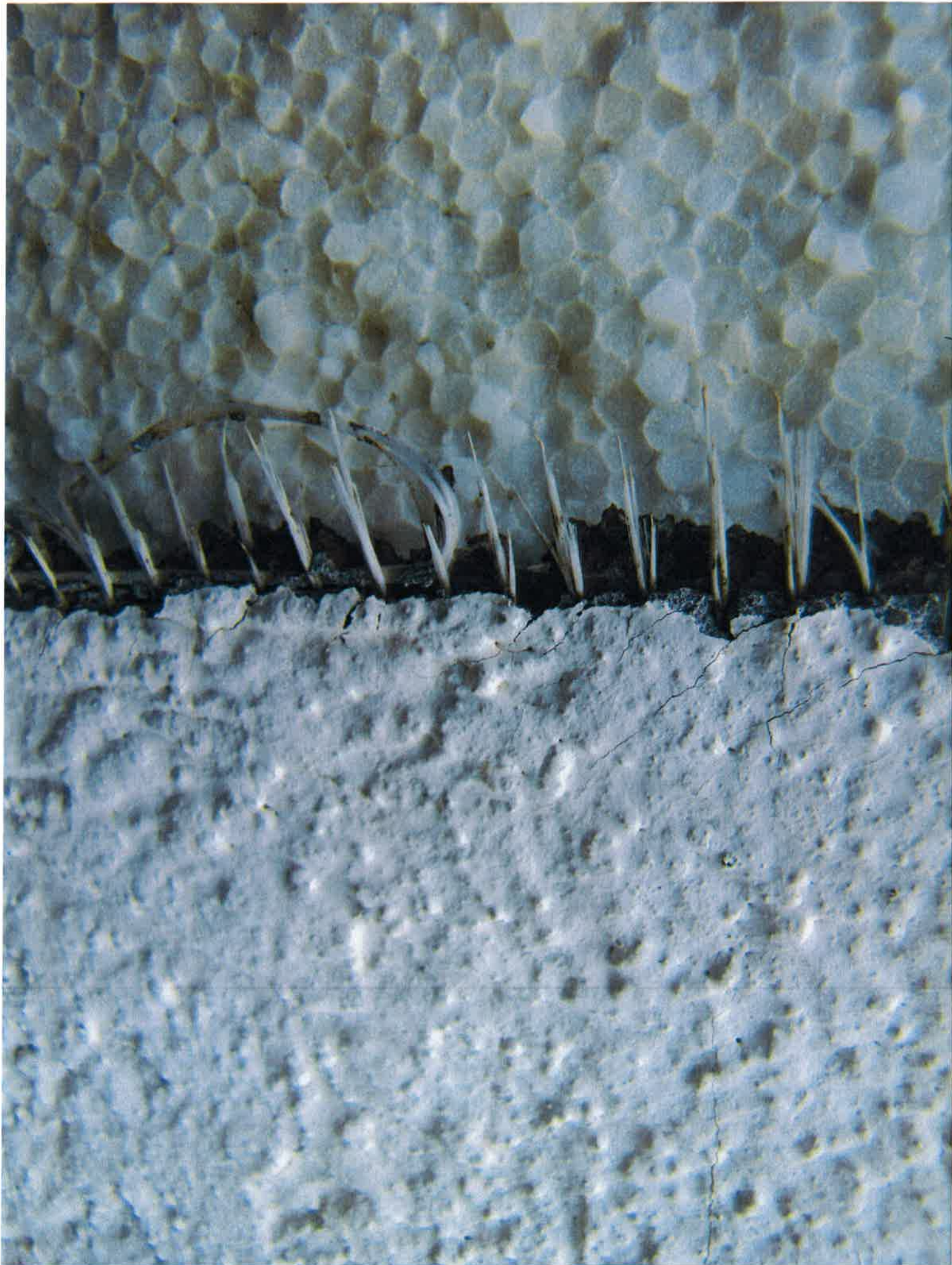
Admiral Office

1000 Point of Cassin Point  
 BY [unclear]  
 [unclear]  
 [unclear]  
 [unclear]  
 [unclear]



**BOYS & GIRLS CLUBS**  
OF LOWER BRULE





x.  
On top of the foam

5. On top of the foam



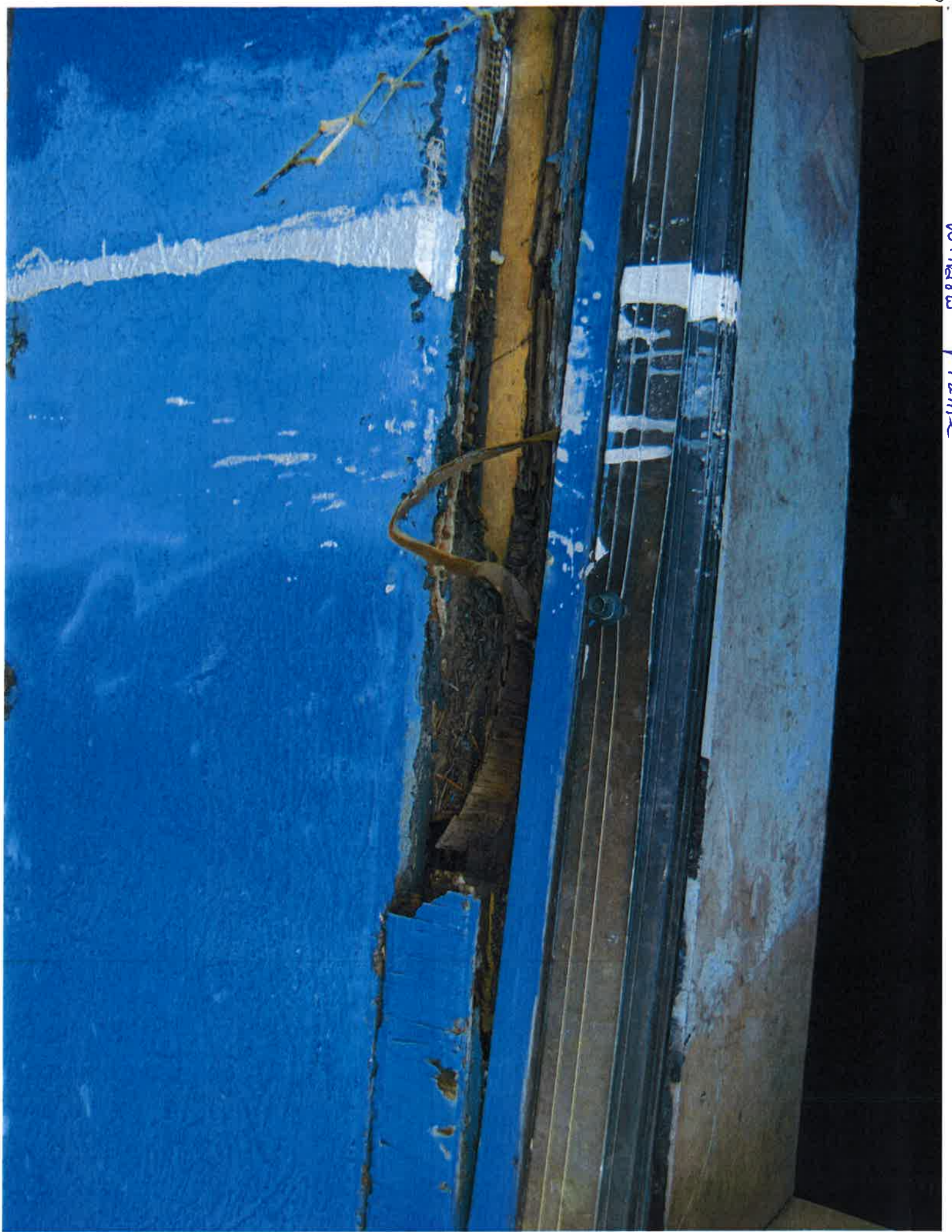


12  
1/2 inch foam + then this sprayed on



Brick - Whole Building







Windows -

1. Looking West Golden Buffalo Casino front of Building



11. East Front of Building Roof is gone



West S. de

19.

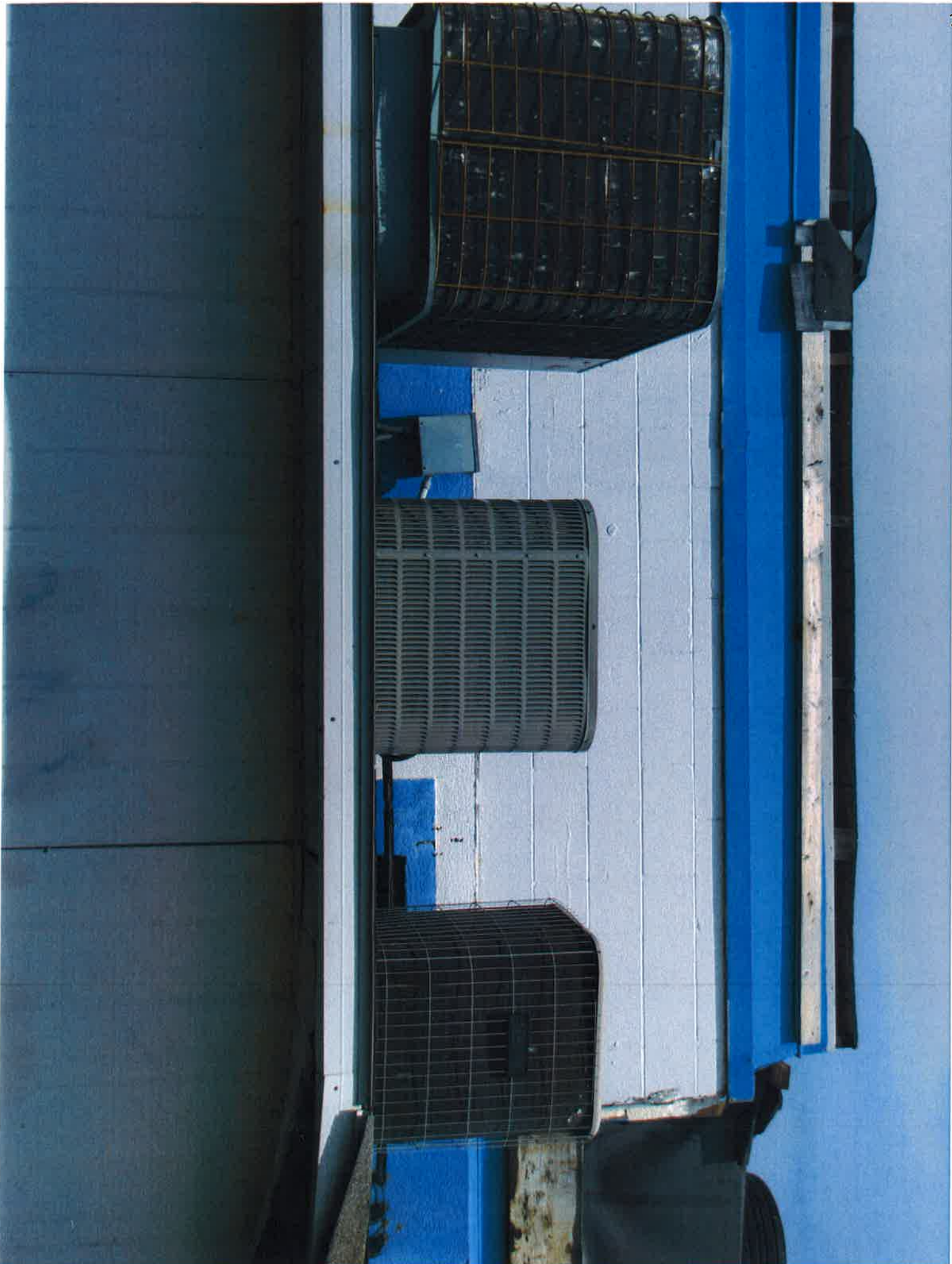


13: South Side

Looking towards Wells Fargo Bank



14. Air Conditioner units





1- Bath room







outside door West side

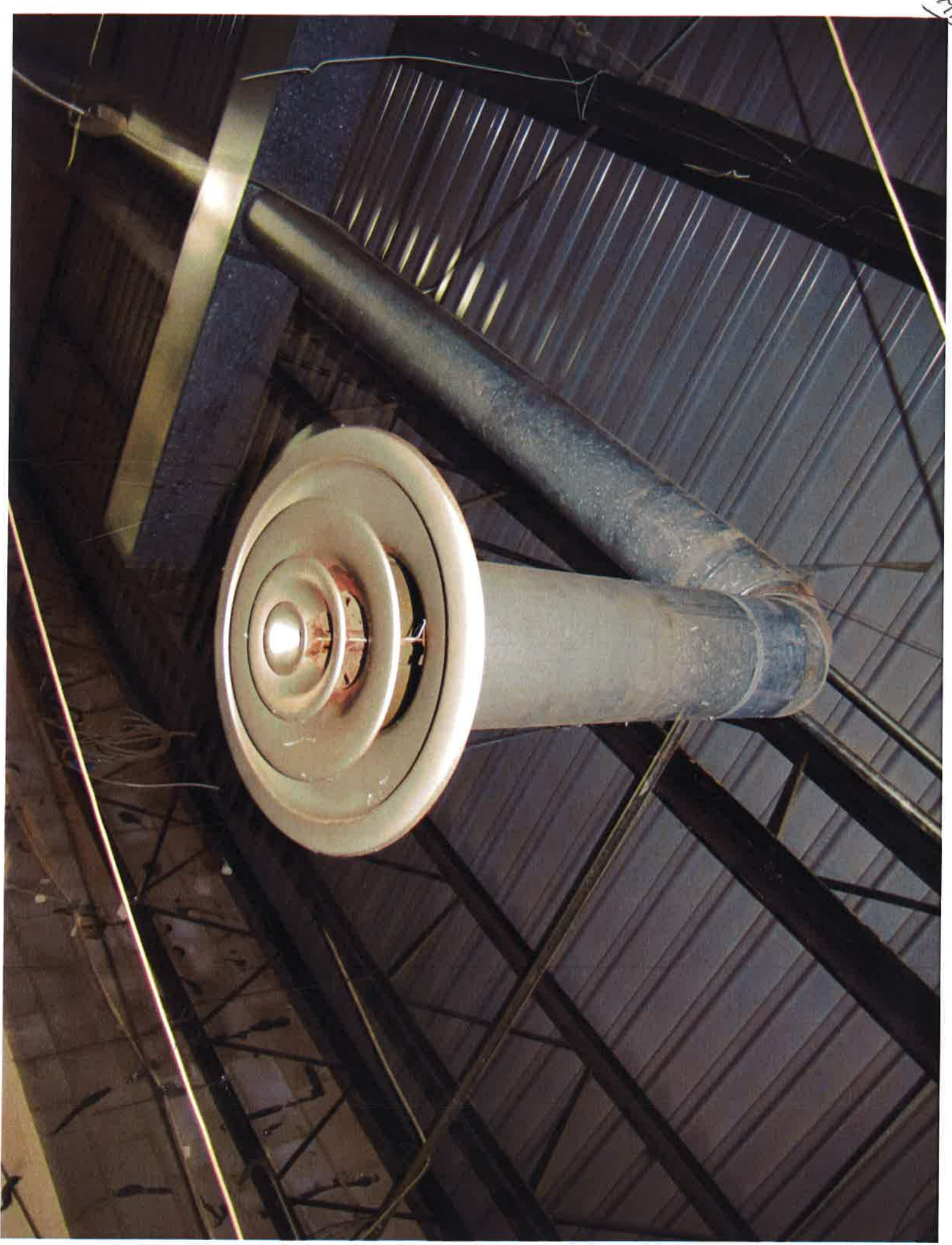
1/1



electric panel

18.

19





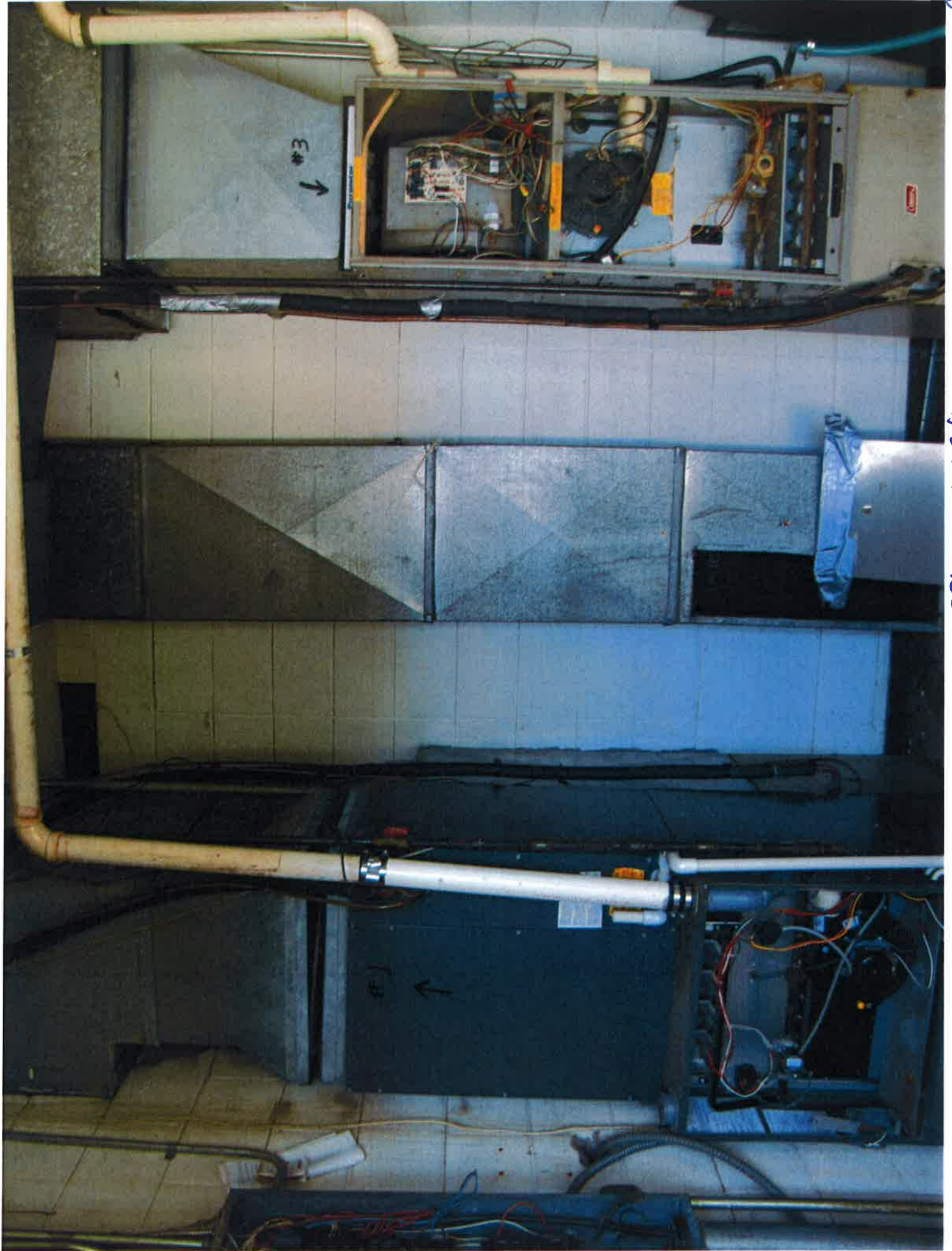
Office

Furnace Room







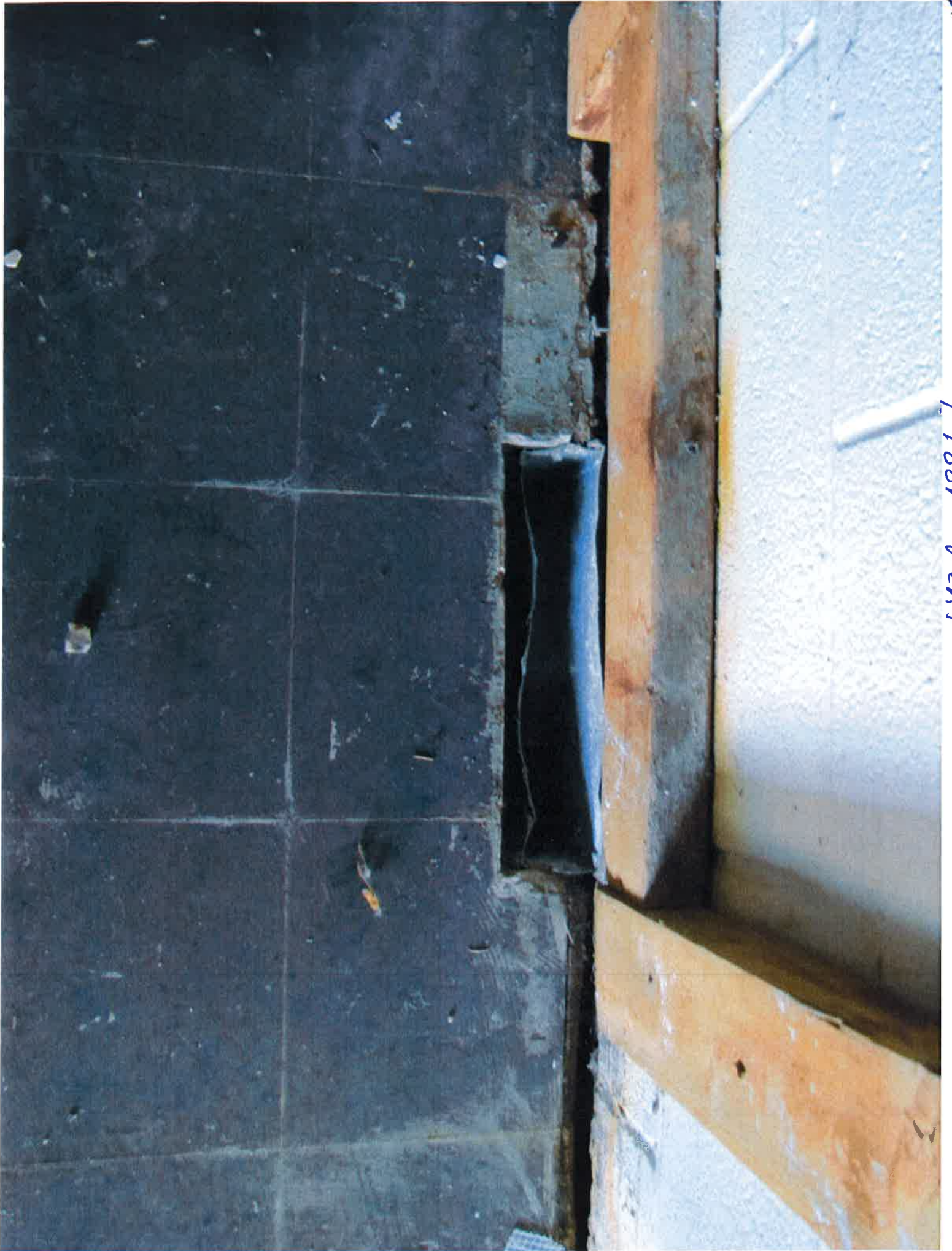


Furnace Room



Ceiling most f.l.s are gone





Floor Vent